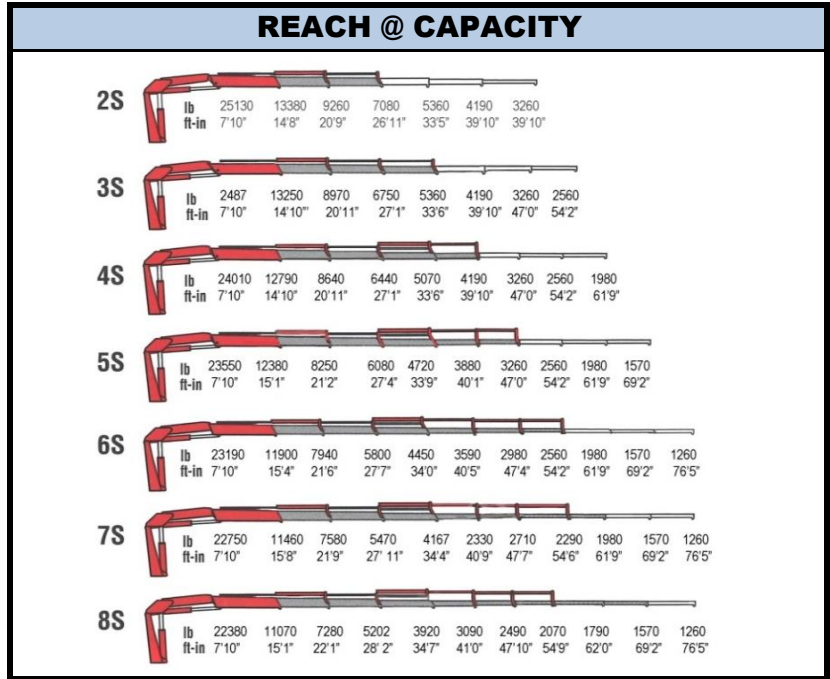




Amco Veba 929 - 29 tm available with up to 8 hydraulic extensions



SPECIFICATIONS	2S	3S	4S	5S	6S	7S	8S
Number of Extensions	2-Hydraulic	3-Hydraulic	4-Hydraulic	5-Hydraulic	6-Hydraulic	7-Hydraulic	8-Hydraulic
Crane Rating (ft. lbs.)	198,000	198,000	198,000	198,000	198,000	198,000	198,000
Max. Horizontal Reach - hydraulic	26'11"	33'6"	39'10"	47'0"	54'2"	61'9"	69'2"
Max. Vertical Reach - hydraulic	39'1"	45'3"	51'10"	58'9"	66'0"	73'6"	81'0"
Max. Capacity (lbs.)	7080	5360	4190	3260	2560	1980	1570
Crane Weight (lbs.)	7070	7420	8070	8340	8600	8820	9630
Crane Dimensions	99"x93"x43"	99"x93"x43"	99"x93"x43"	99"x93"x43"	99"x93"x43"	99"x93"x47"	99"x93"x47"
Mounting Space	7'7"x 7'9"x3'10"	7'7"x 7'9"x3'10"	7'7"x 7'9"x3'10"	7'7"x 7'9"x3'10"	7'7"x 7'9"x3'10"	7'7"x 7'9"x3'10"	7'7"x 7'9"x3'10"
Slewing Angle (degrees)	425	425	425	425	425	425	425
Oil Tank Capacity (gallons)	47.6	47.6	47.6	47.6	47.6	47.6	47.6
Max. Oil Flow (gpm)	21	21	21	21	21	21	21
Max. Working Pressure (psi)	4713	4713	4713	4713	4713	4713	4713
Outrigger Extension	21'8"	21'8"	21'8"	21'8"	21'8"	21'8"	21'8"

STANDARD FEATURES

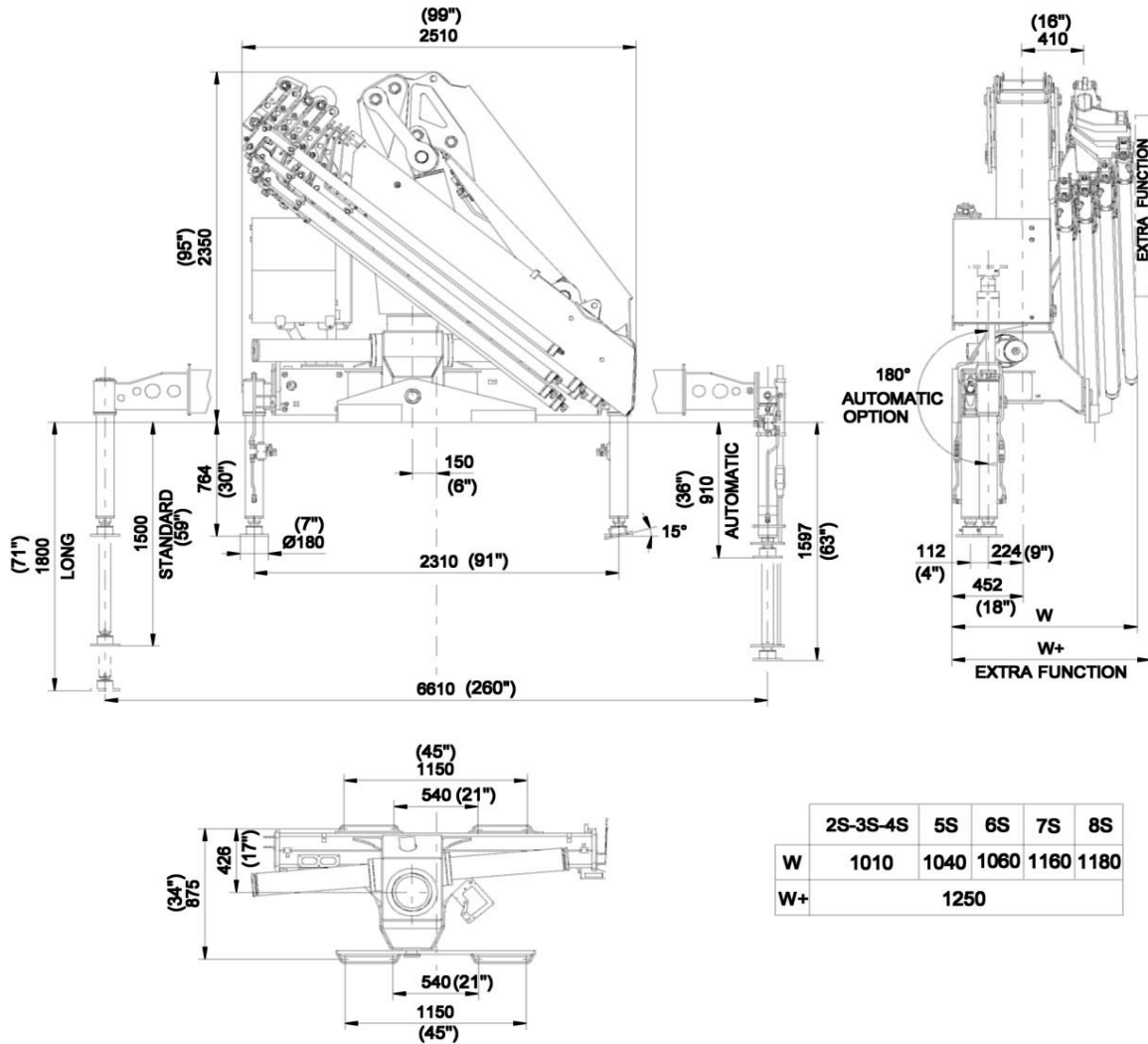
- Dual side controls - except with remote
- Hexagonal extension cylinders
- Sliding pads on telescopic extensions
- Flanged Valves
- Self lubricating bushings
- Oil tank
- Din and JIC fittings
- Designed in accordance with EN 12999
- Fatigue test classifications: B3
- Rack and pinion rotation
- Manually extendable stabilizers
- One year warranty

ACCESSORIES

- RRS radio remote
- Manual extensions
- Optional load limiting device
- Extra function to boom tip
- Extra valve function for winch
- Winch
- Pressure gauge
- Gear pump
- Winch plate
- Turning stabilizers
- Extra side extension of stabilizers
- Stabilizers with hydraulic extensions

DIMENSIONS

929 8S



Rev. 2013/11

2/22

SPECIAL FEATURES

*Optional

*Only with CE or Radio Remote



RRS
RADIO REMOTE STANDARD

Radio Remote Control

The operator can control the crane with high precision proportional levers in every position, and in doing so, can supervise the loading and unloading operations. That means a time savings and greater safety. The operator can also control the truck engine start, stop and accelerator with the remote control. All of the remote controls used by AMCO VEBA have an identification code and are shielded from electro-magnetic fields and from external radio signals.



EBB
ELECTRONIC BLACK BOX

Electronic Black Box

Amco Veba has designed this control motherboard to ensure an effective and reliable control of the crane in every working condition. The operator can read on the display all the information about the state of the crane, of the accessories, and of the routine maintenance. All components are designed according to automotive industry standards and ensure the highest reliability.



SDD
Soft Descend Drive

Soft Descend Drive

The SDD system is designed to reduce the oscillations and ensure a perfect control of the motions



SGS
Sprint Generation System

The purpose of SGS system is to increase the extensions speed without affecting the crane. safety.



AVPS
Amco Veba Power System

AVPS system can reach longer outreach with very heavy load, with the highest precision.