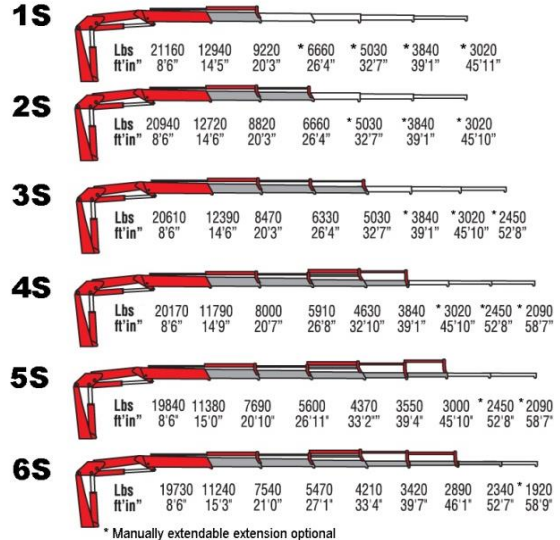




Amco Veba 828 - 28 tm available with up to 6 hydraulic extensions



REACH @ CAPACITY



SPECIFICATIONS	1S	2S	3S	4S	5S	6S
Number of Extensions	1-Hydraulic	2-Hydraulic	3-Hydraulic	4-Hydraulic	5-Hydraulic	5-Hydraulic
Crane Rating (ft. lbs.)	187,000	187,000	187,000	187,000	187,000	187,000
Max. Horizontal Reach - hydraulic	20'3"	26'4"	32'7"	39'1"	45'10"	52'7"
Max. Vertical Reach - hydraulic	32'3"	38'3"	44'0"	50'2"	56'9"	63'3"
Max. Capacity (lbs.)	8820	6310	4720	3550	2760	2120
Crane Weight (lbs.)	6770	7170	7470	7830	8140	8340
Crane Dimensions	100"x92"x44"	100"x92"x44"	100"x92"x44"	100"x92"x44"	100"x92"x44"	100"x92"x48"
Mounting Space	8'4"x3'11"x7'7"	8'4"x3'11"x7'7"	8'4"x3'11"x7'7"	8'4"x3'11"x7'7"	8'4"x3'11"x7'7"	8'4"x3'11"x7'7"
Slewing Angle (degrees)	397	397	397	397	397	397
Oil Tank Capacity (gallons)	42.3	42.3	42.3	42.3	42.3	42.3
Max. Oil Flow (gpm)	10	10	10	10	10	10
Max. Working Pressure (psi)	4424	4424	4424	4424	4424	4424
Outrigger Extention	18'1"	18'1"	18'1"	18'1"	18'1"	18'1"

STANDARD FEATURES

- Dual side controls - except with remote
- Hexagonal extension cylinders
- Sliding pads on telescopic extensions
- Flanged Valves
- Self lubricating bushings
- Oil tank
- Din and JIC fittings
- Designed in accordance with EN 12999
- Fatigue test classifications: B3
- Rack and pinion rotation
- Manually extendable stabilizers
- One year warranty

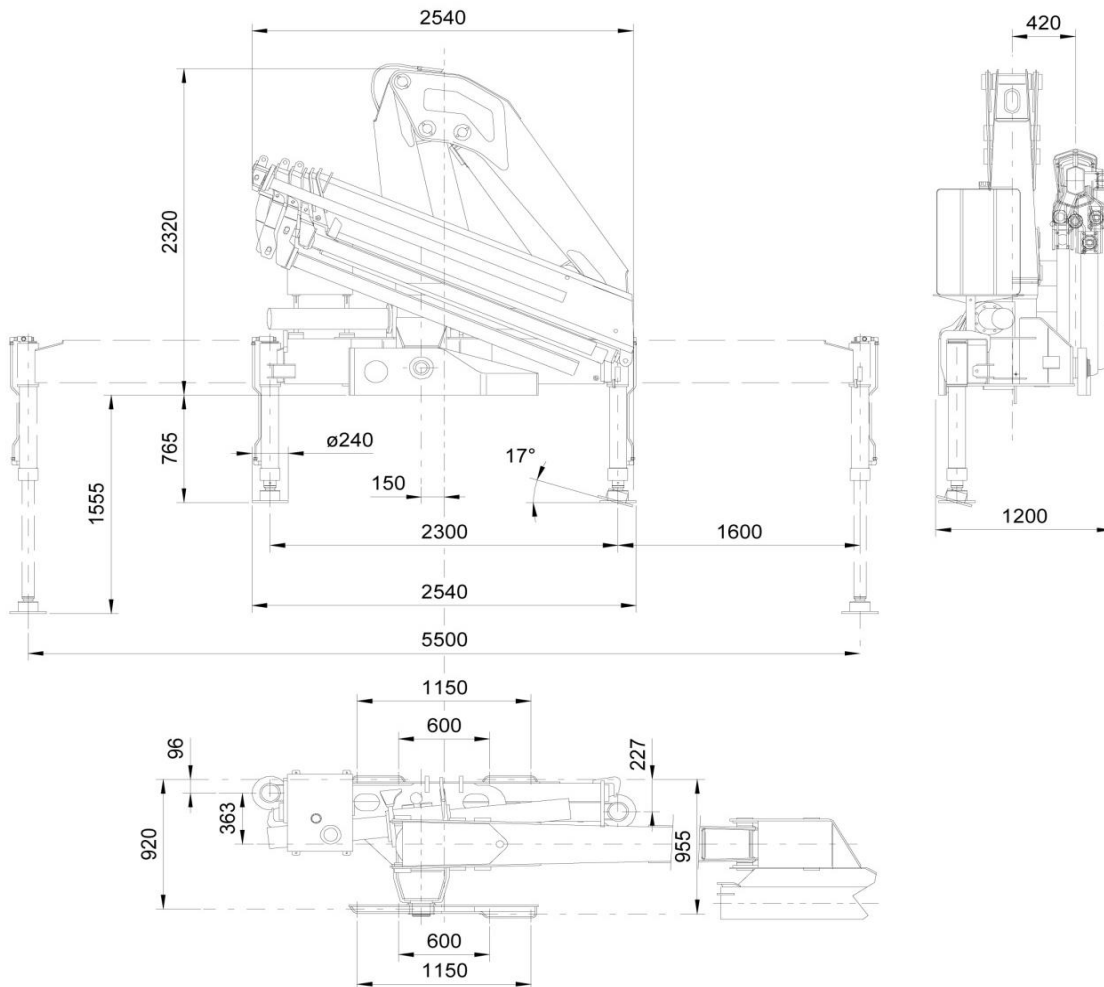
ACCESSORIES

- RRS radio remote
- Manual extensions
- Optional load limiting device
- Extra function to boom tip
- Extra valve function for winch
- Winch
- Pressure gauge
- Gear pump
- Winch plate
- Turning stabilizers
- Extra side extension of stabilizers
- Stabilizers with hydraulic extensions

DIMENSIONS (mm)

825 - 828 6S

DIMENSIONS mm 1000mm = 39.4"



Rev. 2010-12

SPECIAL FEATURES

**Optional*

AVPS Amco Veba Power System

AVPS system can reach longer outreach with very heavy load, with the highest precision.

RRS Radio Remote Control

The operator can control the crane with high precision proportional levers in every position, and in doing so, can supervise the loading and unloading operations. That means a time savings and greater safety. The operator can also control the truck engine start, stop and accelerator with the remote control. All of the remote controls used by AMCO VEBA have an identification code and are shielded from electro-magnetic fields and from external radio signals.

**Only with CE or Radio Remote*

EBB Electronic Black Box

Amco Veba has designed this control motherboard to ensure an effective and reliable control of the crane in every working condition. The operator can read on the display all information about the state of the crane, of the accessories and if the routine maintenance. All components are designed according to automotive industry standards and ensure the highest reliability.