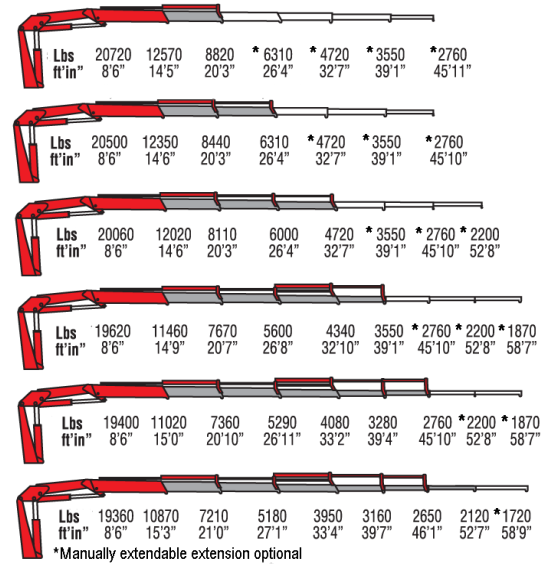




Amco Veba 825 - 25 tm available with up to 6 hydraulic extensions



REACH @ CAPACITY



SPECIFICATIONS	1S	2S	3S	4S	5S	6S
Number of Extensions	1-Hydraulic	2-Hydraulic	3-Hydraulic	4-Hydraulic	5-Hydraulic	5-Hydraulic
Crane Rating (ft. lbs.)	181,000	181,000	181,000	181,000	181,000	181,000
Max. Horizontal Reach - hydraulic	20'5"	26'7"	33'0"	39'4"	46'3"	53'2"
Max. Vertical Reach - hydraulic	32'3"	38'3"	44'0"	50'2"	56'9"	63'3"
Max. Capacity (lbs.)	8820	6310	4720	3550	2760	2120
Crane Weight (lbs.)	6660	7050	7360	7720	8020	8230
Crane Dimensions	100"x92"x44"	100"x92"x44"	100"x92"x44"	100"x92"x44"	100"x92"x44"	100"x92"x44"
Mounting Space	8'4"x3'11"x7'7"	8'4"x3'11"x7'7"	8'4"x3'11"x7'7"	8'4"x3'11"x7'7"	8'4"x3'11"x7'7"	8'4"x3'11"x7'7"
Slewing Angle (degrees)	397	397	397	397	397	397
Oil Tank Capacity (gallons)	42.3	42.3	42.3	42.3	42.3	42.3
Max. Oil Flow (gpm)	10	10	10	10	10	10
Max. Working Pressure (psi)	4206	4206	4206	4206	4206	4206
Outrigger Extention	18'1"	18'1"	18'1"	18'1"	18'1"	18'1"

STANDARD FEATURES

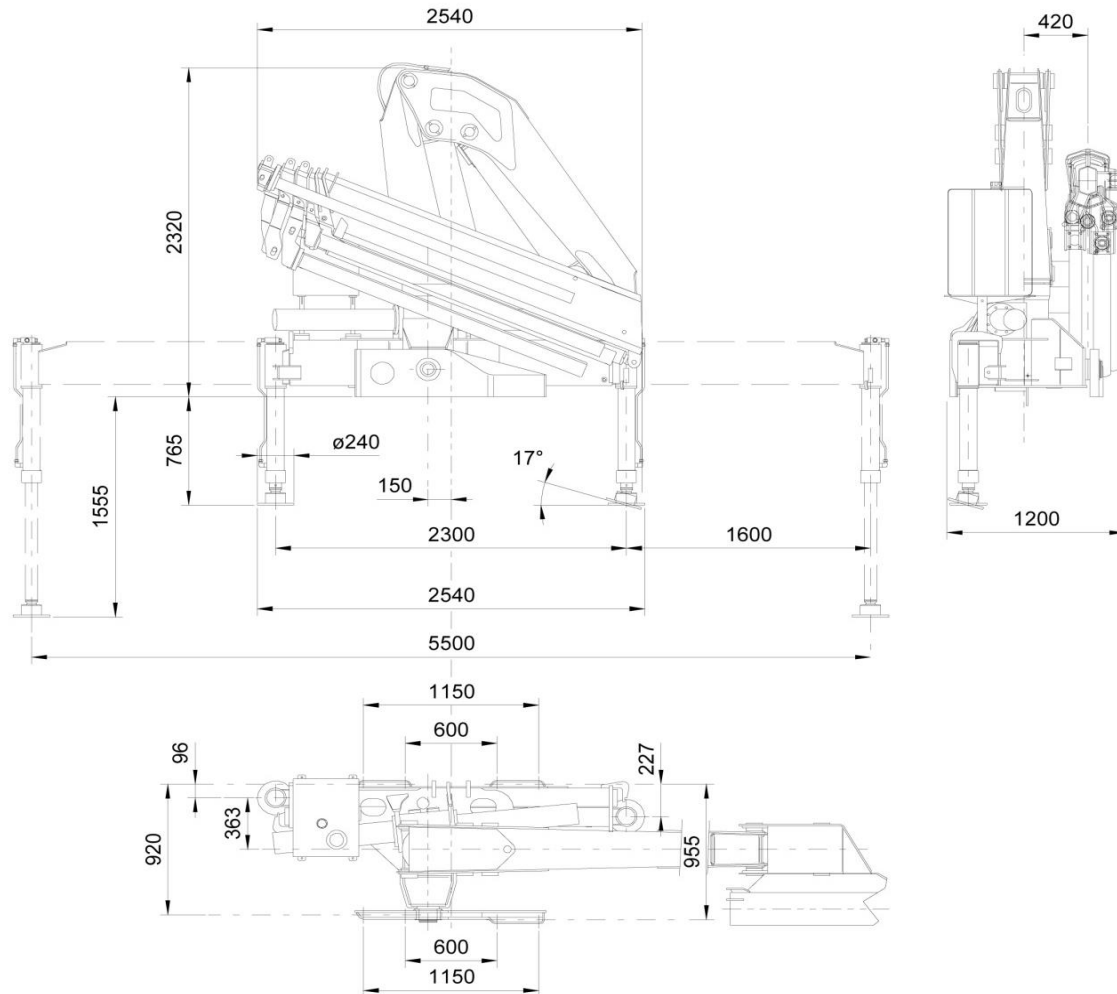
- Dual side controls - except with remote
- Hexagonal extension cylinders
- Sliding pads on telescopic extensions
- Flanged Valves
- Self lubricating bushings
- Oil tank
- Din and JIC fittings
- Designed in accordance with EN 12999
- Fatigue test classifications: B3
- Rack and pinion rotation
- Manually extendable stabilizers
- One year warranty

ACCESSORIES

- RRS radio remote
- Manual extensions
- Optional load limiting device
- Extra function to boom tip
- Extra valve function for winch
- Winch
- Pressure gauge
- Gear pump
- Winch plate
- Turning stabilizers
- Extra side extension of stabilizers
- Stabilizers with hydraulic extensions

DIMENSIONS (mm)

DIMENSIONS mm 1000mm = 39.4"
825 - 828 6S



Rev. 2010-12

SPECIAL FEATURES

**Optional*



RRS Radio Remote Control

The operator can control the crane with high precision proportional levers in every position, and in doing so, can supervise the loading and unloading operations. That means a time savings and greater safety. The operator can also control the truck engine start, stop and accelerator with the remote control. All of the remote controls used by AMCO VEBA have an identification code and are shielded from electro-magnetic fields and from external radio signals.

**Only with CE or Radio Remote*



EBB Electronic Black Box

Amco Veba has designed this control motherboard to ensure an effective and reliable control of the crane in every working condition. The operator can read on the display all information about the state of the crane, of the accessories and if the routine maintenance. All components are designed according to automotive industry standards and ensure the highest reliability.