



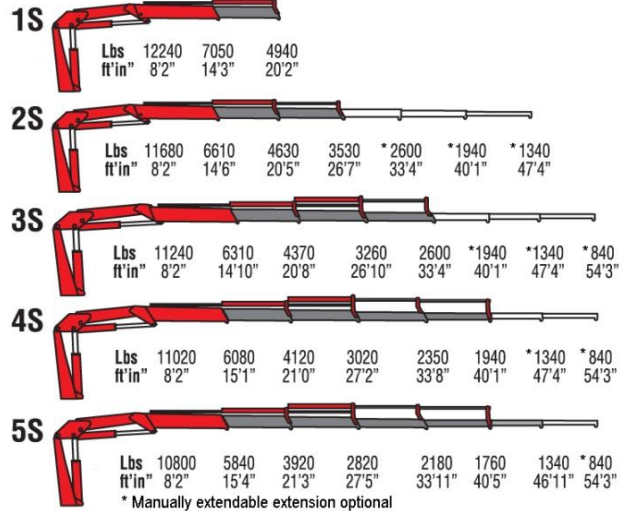
585 E. South Frontage Rd., Bolingbrook, IL 60440 1-800-739-4430 • www.fischercrane.com • sales@fischercrane.com



## Amco Veba 815 - 15 tm available with up to 5 hydraulic extensions



### REACH @ CAPACITY



SPECIFICATIONS	1S	2S	3S	4S	5S
Number of Extensions	1-Hydraulic	2-Hydraulic	3-Hydraulic	4-Hydraulic	5-Hydraulic
Crane Rating (ft. lbs.)	101,000 (15 tm)	101,000 (15 tm)	101,000 (15 tm)	101,000 (15 tm)	101,000 (15 tm)
Max. Horizontal Reach - hydraulic	20'2"	26'7"	33'4"	40'1"	46'11"
Max. Vertical Reach - hydraulic	31'10"	38'1"	44'7"	51'2"	57'9"
Max. Capacity (lbs.)	4940	3530	2600	1940	1340
Crane Weight (lbs.)	3680	3970	4230	4450	4630
Crane Dimensions	97"x93"x32"	97"x93"x32"	97"x93"x32"	98"x93"x32"	99"x93"x36"
Mounting Space	8'1"x2'10"x7'9"	8'1"x2'10"x7'9"	8'1"x2'10"x7'9"	8'1"x2'10"x7'9"	8'1"x2'10"x7'9"
Slewing Angle (degrees)	380	380	380	380	380
Oil Tank Capacity (gallons)	26.4	26.4	26.4	26.4	26.4
Max. Oil Flow (gpm)	6.6	6.6	6.6	6.6	6.6
Max. Working Pressure (psi)	4206	4206	4206	4206	4206
Outrigger Extension	13'1"	13'1"	13'1"	13'1"	13'1"

### STANDARD FEATURES

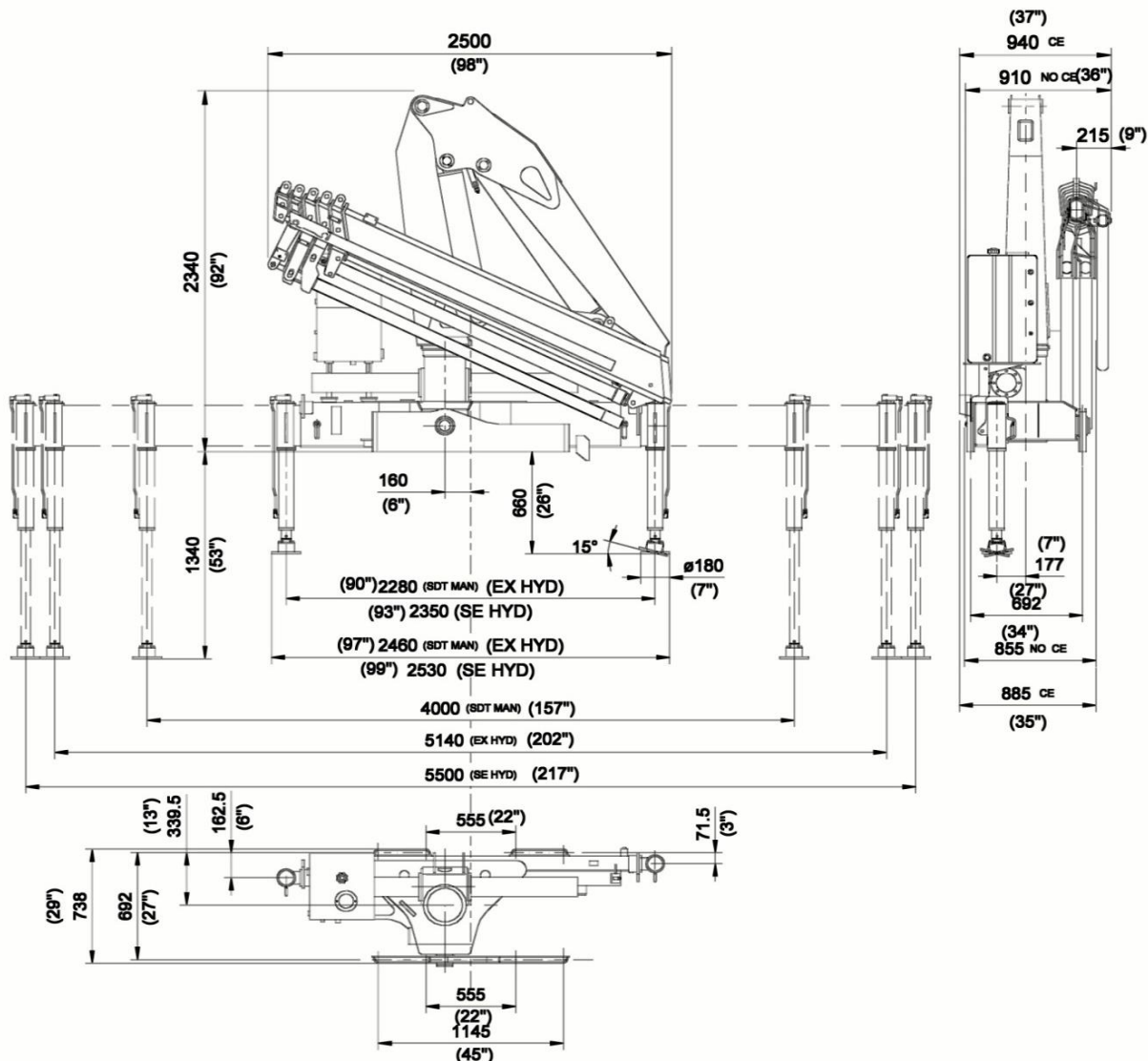
- Dual side controls - except with remote*
- Hexagonal extension cylinders*
- Sliding pads on telescopic extensions*
- Flanged Valves*
- Self lubricating bushings*
- Oil tank*
- Din and JIC fittings*
- Designed in accordance with EN 12999*
- Fatigue test classifications: B3*
- Rack and pinion rotation*
- Manually extendable stabilizers*
- One year warranty*

### ACCESSORIES

- RRS radio remote*
- Manual extensions*
- Optional load limiting device*
- Extra function to boom tip*
- Extra valve function for winch*
- Winch*
- Pressure gauge*
- Gear pump*
- Winch plate*
- Turning stabilizers*
- Extra side extension of stabilizers*
- Stabilizers with hydraulic extensions*

## DIMENSIONS

### 815 5S



Rev. 2014-06

6 / 26

## SPECIAL FEATURES

**SGS**   
**Sprint Generation System**  
 The purpose of SGS system is to increase the extensions speed without affecting the crane safety.

*\*Optional Radio Remote Control*

*\*Only with Radio Remote*

**RRS**   
**RADIO REMOTE STANDARD**

### Radio Remote Control

The operator can control the crane with high precision proportional levers in every position, and in doing so, can supervise the loading and unloading operations. That means a time savings and greater safety. The operator can also control the truck engine start, stop and accelerator with the remote control. All of the remote controls used by AMCO VEBA have an identification code and are shielded from electro-magnetic fields and from external radio signals.

**EBB**   
**ELECTRONIC BLACK BOX**

### Electronic Black Box

Amco Veba has designed this control motherboard to ensure an effective and reliable control of the crane in every working condition. The operator can read on the display all the information about the state of the crane, of the accessories, and of the routine maintenance. All components are designed according to automotive industry standards and ensure the highest reliability.