



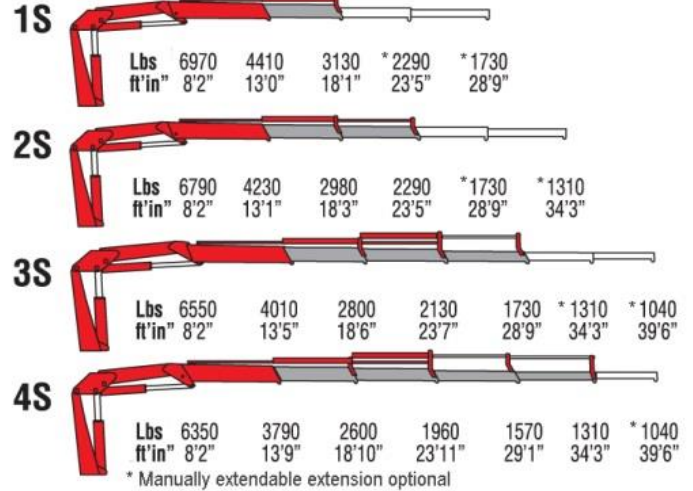
585 E. South Frontage Rd., Bolingbrook, IL 60440 1-800-739-4430 • www.fischercrane.com • sales@fischercrane.com



Amco Veba 808N / 908N RRS - 8 tm available with up to 4 hydraulic extensions



REACH @ CAPACITY



SPECIFICATIONS	1S	2S	3S	4S
Number of Extensions	1-Hydraulic	2-Hydraulic	3-Hydraulic	4-Hydraulic
Crane Rating (ft. lbs.)	51,900	51,900	51,900	51,900
Max. Horizontal Reach - hydraulic	18'1"	23'4"	28'9"	34'1"
Max. Vertical Reach - hydraulic	27'11"	33'6"	38'5"	43'8"
Max. Capacity (lbs.)	2820	2060	1540	1160
Crane Weight (lbs.)	2030	2200	2340	2470
Crane Dimensions	91"x78"x24"	91"x78"x24"	91"x78"x24"	91"x78"x24"
Mounting Space	7'1"x2'x6'6"	7'1"x2'x6'6"	7'1"x2'x6'6"	7'1"x2'x6'6"
Slewing Angle (degrees)	387	387	387	387
Oil Tank Capacity (gallons)	9.2	9.2	9.2	9.2
Max. Oil Flow (gpm)	5.3	5.3	5.3	5.3
Max. Working Pressure (psi)	4133	4133	4133	4133
Outrigger Extention	11'5"	11'5"	11'5"	11'5"

STANDARD FEATURES

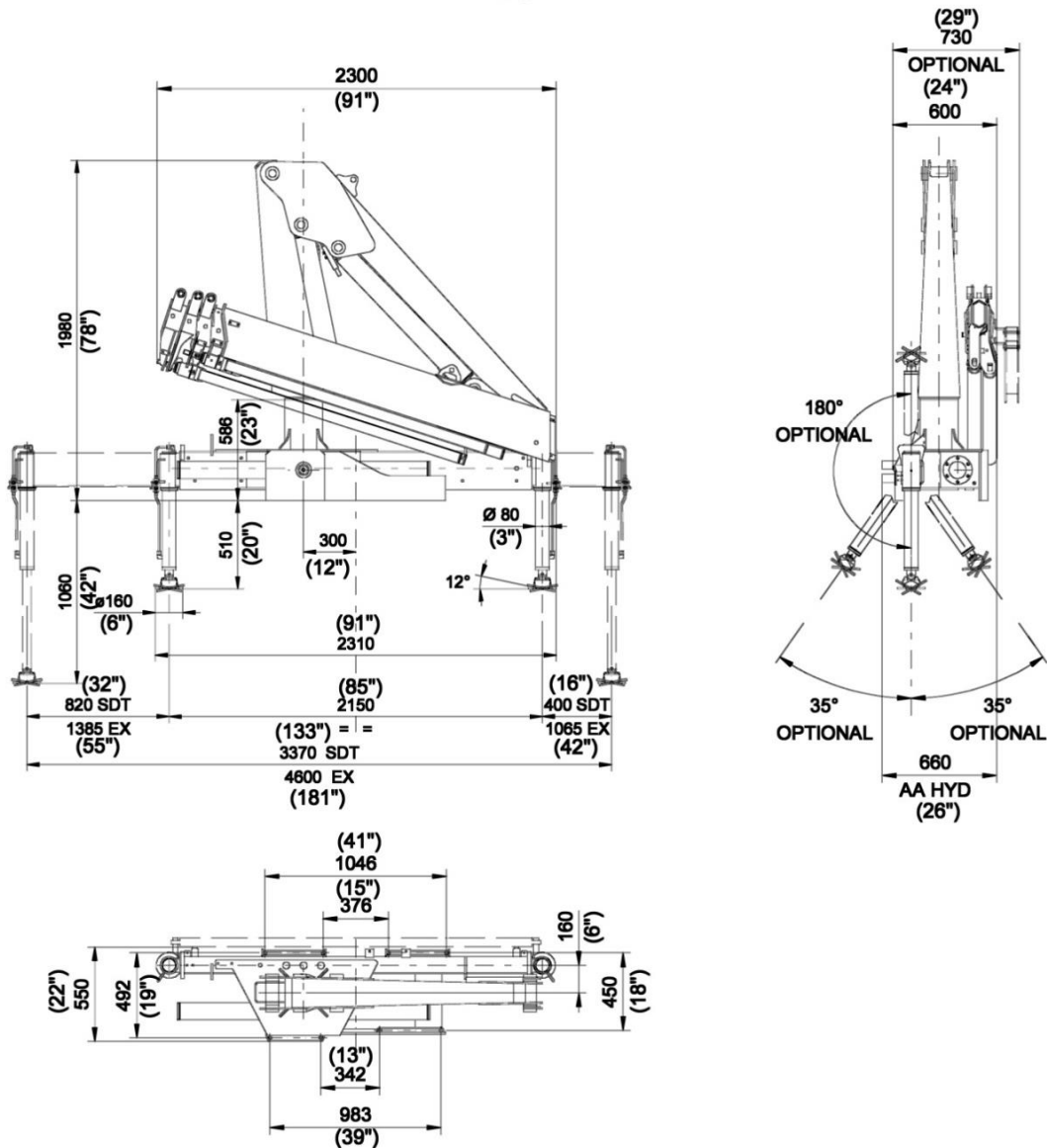
- Dual side controls - except with remote
- Hexagonal extension cylinders
- Sliding pads on telescopic extensions
- Flanged Valves
- Self lubricating bushings
- Oil tank
- Din and JIC fittings
- Designed in accordance with EN 12999
- Fatigue test classifications: B3
- Rack and pinion rotation
- Manually extendable stabilizers
- One year warranty

ACCESSORIES

- RRS radio remote
- Manual extensions
- Optional load limiting device
- Extra function to boom tip
- Extra valve function for winch
- Winch
- Pressure gauge
- Gear pump
- Winch plate
- Turning stabilizers
- Extra side extension of stabilizers
- Stabilizers with hydraulic extensions

DIMENSIONS

808N 908N 4S



Rev. 2014-02

5 / 23

SPECIAL FEATURES

**908 Model Includes*

**Only with CE or Radio Remote*

RRS
RADIO REMOTE STANDARD
Radio Remote Control

The operator can control the crane with high precision proportional levers in every position, and in doing so, can supervise the loading and unloading operations. That means a time savings and greater safety. The operator can also control the truck engine start, stop and accelerator with the remote control. All of the remote controls used by AMCO VEBA have an identification code and are shielded from electro-magnetic fields and from external radio signals.



EBB
Electronic Black Box

Amco Veba has designed this control motherboard to ensure an effective and reliable control of the crane in every working condition. The operator can read on the display all the information about the state of the crane, of the accessories, and of the routine maintenance. All components are designed according to automotive industry standards and ensure the highest reliability.