



Amco Veba 806N / 906N RRS - 6 tm available with up to 4 hydraulic extensions



REACH @ CAPACITY								
1S		Lbs ft'in"	3750 12'9"	2670 17'10"	*1930 23'4"	*1430 28'8"		
2S		Lbs ft'in"	3550 13'1"	2490 18'3"	1930 23'4"	*1430 28'8"	*1080 34'1"	
3S		Lbs ft'in"	3350 13'3"	2330 18'4"	1760 23'7"	1430 28'8"	*1080 34'1"	*880 39'4"
4S		Lbs ft'in"	3170 13'7"	2160 18'8"	1620 23'11"	1290 29'0"	1080 34'1"	*880 39'4"

*Manually extendable extension optional

SPECIFICATIONS	1S	2S	3S	4S
Number of Extensions	1-Hydraulic	2-Hydraulic	3-Hydraulic	4-Hydraulic
Crane Rating (ft. lbs.)	31,800 (5 tm)	31,800 (5 tm)	31,800 (5 tm)	31,800 (5 tm)
Max. Horizontal Reach - hydraulic	17'10"	23'4"	28'8"	34'1"
Max. Vertical Reach - hydraulic	27'7"	32'10"	38'1"	43'4"
Max. Capacity (lbs.)	2670	1930	1430	1080
Crane Weight (lbs.)	1984	2140	2270	2380
Crane Dimensions	89x78x24	89x78x24	89x78x24	89x78x24
Mounting Space	7'4"x2'0"x6'6"	7'4"x2'0"x6'6"	7'4"x2'0"x6'6"	7'4"x2'0"x6'6"
Slewing Angle (degrees)	387	387	387	387
Oil Tank Capacity (gallons)	9.25	9.25	9.25	9.25
Max. Oil Flow (gpm)	5.3	5.3	5.3	5.3
Max. Working Pressure (psi)	3553	3553	3553	3553
Outrigger Extension	10'10"	10'10"	10'10"	10'10"

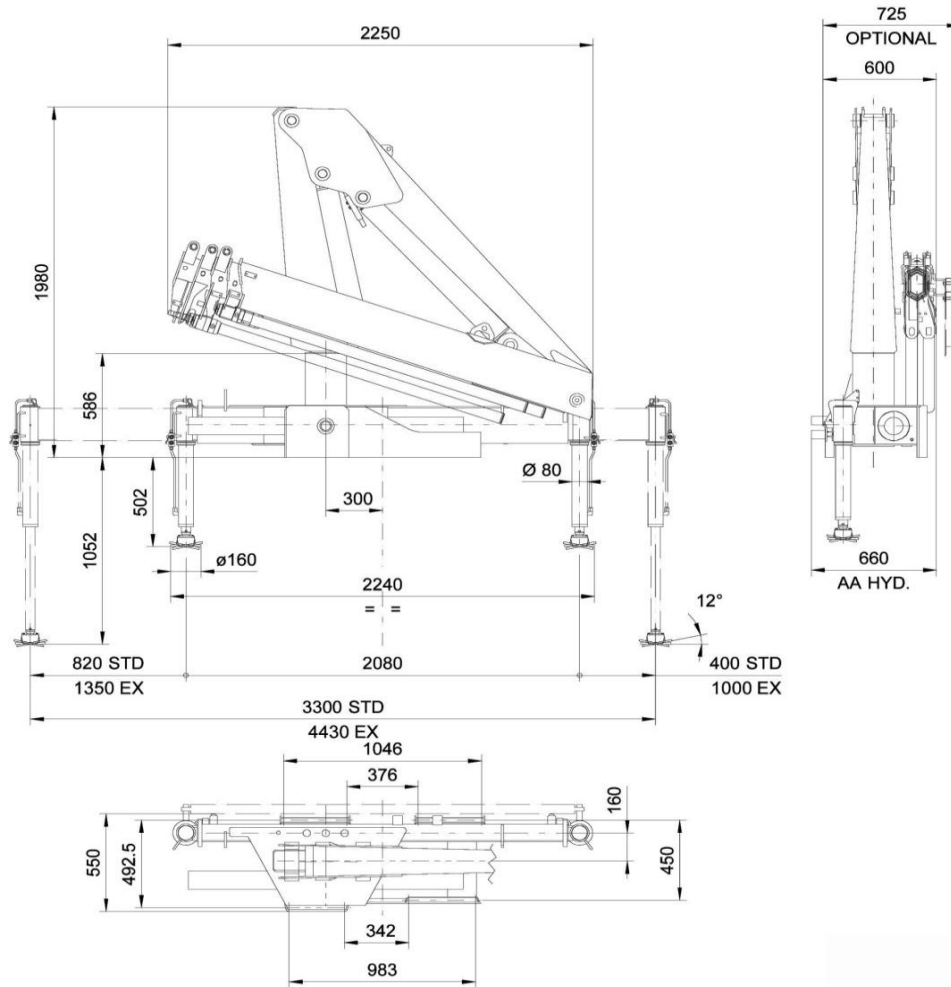
- STANDARD FEATURES**
- Dual side controls - except with remote
 - Hexagonal extension cylinders
 - Sliding pads on telescopic extensions
 - Flanged Valves
 - Self lubricating bushings
 - Oil tank
 - Din and JIC fittings
 - Designed in accordance with EN 12999
 - Fatigue test classifications: B3
 - Rack and pinion rotation
 - Manually extendable stabilizers
 - One year warranty

- ACCESSORIES**
- RRS radio remote
 - Manual extensions
 - Optional load limiting device
 - Extra function to boom tip
 - Extra valve function for winch
 - Winch
 - Pressure gauge
 - Gear pump
 - Winch plate
 - Turning stabilizers
 - Extra side extension of stabilizers
 - Stabilizers with hydraulic extensions

DIMENSIONS (mm)

806N 906N 4S

DIMENSIONS mm 1000mm = 39.4"



Rev.2012-07

SPECIAL FEARES

*906N Model Includes

*Only with CE or Radio Remote



Radio Remote Control

The operator can control the crane with high precision proportional levers in every position, and in doing so, can supervise the loading and unloading operations. That means a time savings and greater safety. The operator can also control the truck engine start, stop and acclerator with the remote control. All of the remote controls used by AMCO VEBA have an identification code and are shielded from electro-magnetic fields and from external radio signals.



Electronic Black Box

Amco Veba has designed this control motherboard to ensure an effective and reliable control of the crane in every working condition. The operator can read on the display all information about the state of the crane, of the accessories and if the routine maintenance. All components are designed according to automotive industry standards and ensure the highest reliability.