



T Series Amco Veba 805T / 905T RRS - 5 tm available with up to 4 hydraulic extensions

Easy to use

By having one less function and simpler geometry, the crane is easier to stow, unstow, and use. This makes it very suitable for occasional operators, companies with many operators, and for rental companies.

Light

We omit the first boom found on an articulated version, as well as the offset second boom. Instead, we use an inline boom with extensions. This reduces the weight of the crane.

Compact

Thanks to the design a "T" crane takes up less space on the chassis. The body can be built longer to add space for cargo.



REACH @ CAPACITY								
2S		Lbs	4590	2620	1830	*1290		
		ft'in"	6'1"	10'6"	15'0"	19'9"		
3S		Lbs	4250	2450	1690	1290	*940	
		ft'in"	6'5"	10'10"	15'4"	19'9"	24'7"	
4S		Lbs	3900	2250	1540	1160	940	*710
		ft'in"	6'9"	11'2"	15'8"	20'1"	24'7"	29'4"
*Manually extedable extension optional								

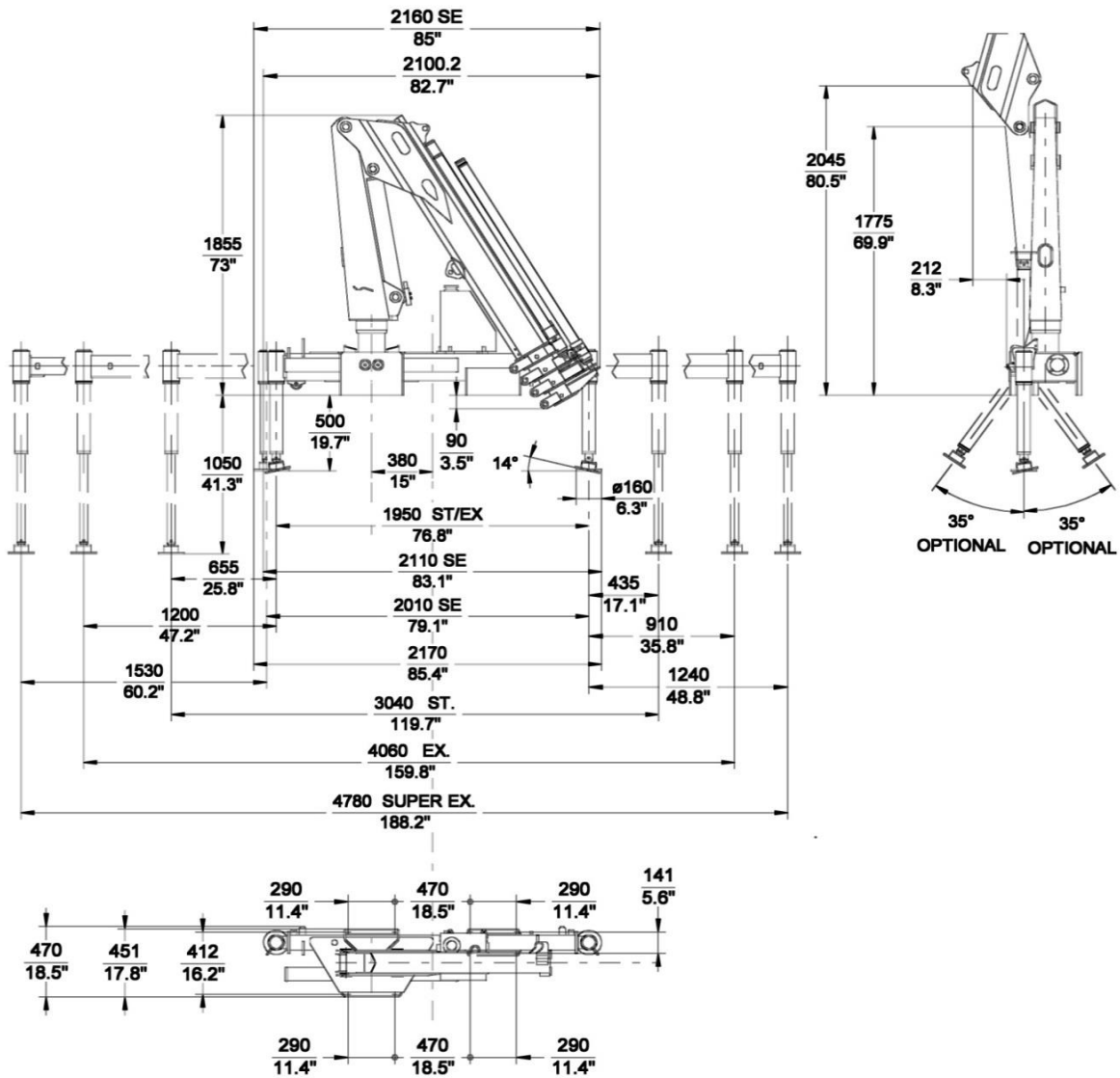
SPECIFICATIONS	2S	3S	4S
Number of Extensions	2-Hydraulic	3-Hydraulic	4-Hydraulic
Crane Rating (ft. lbs.)	27,800	27,800	27,800
Max. Horizontal Reach - hydraulic	15'0"	19'9"	24'7"
Max. Vertical Reach - hydraulic	23'11"	28'10"	33'6"
Max. Capacity (lbs.)	1830	1290	940
Crane Weight (lbs.)	1640	1740	1830
Crane Dimensions	83"x74"x19"	83"x74"x19"	83"x74"x19"
Mounting Space	6'9"x1'5"x6'1"	6'9"x1'5"x6'1"	6'9"x1'5"x6'1"
Slewing Angle (degrees)	380	380	380
Oil Tank Capacity (gallons)	9.3	9.3	9.3
Max. oil flow (gpm)	4.3	4.3	4.3
Max. working pressure (psi)	3190	3190	3190
Outrigger Extention	10'0"	10'0"	10'0"

STANDARD FEATURES
Dual Controls
Hexagonal section extensions
Independent extension cylinders
Designed in accordance with EN12999
Fixed stabilizer cylinders
Flanged Valves
SAE and JIC fittings
One year warranty

ACCESSORIES
Radio Remote Control
Manual extensions
Turning stabilizers
Supplementary element activation
Winch
Remote Control
Outrigger with hydraulic extension
Load limiting device

DIMENSIONS

805T 4S



Rev. 06-2014

4 / 20

SPECIAL FEATURES

Optional Radio Remote Control



Radio Remote Control

The operator can control the crane with high precision proportional levers in every position, and in doing so, can supervise the loading and unloading operations. That means a time savings and greater safety. The operator can also control the truck engine start, stop and acclerator with the remote control. All of the remote controls used by AMCO VEBA have an identification code and are shielded from electro-magnetic fields and from external radio signals.