



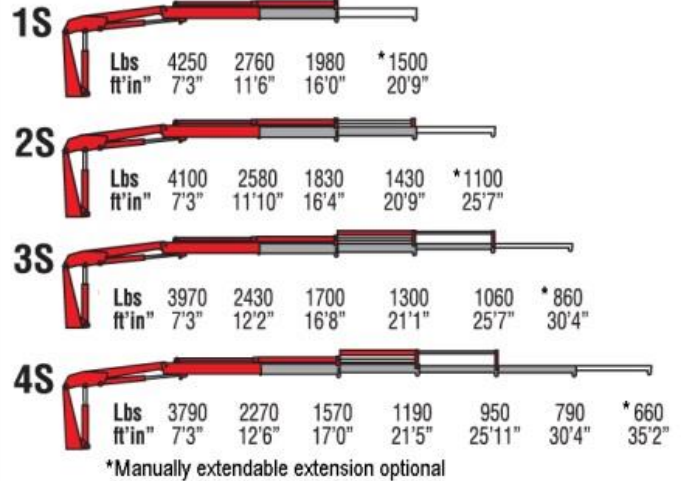
585 E. South Frontage Rd., Bolingbrook, IL 60440 1-800-739-4430 • www.fischercrane.com • sales@fischercrane.com



## Amco Veba 805 / 905 RRS - 5 tm available with up to 4 hydraulic extensions



### REACH @ CAPACITY



SPECIFICATIONS	1S	2S	3S	4S
Number of Extensions	1-Hydraulic	2-Hydraulic	3-Hydraulic	4-Hydraulic
Crane Rating (ft. lbs.)	31,800	31,800	31,800	31,800
Max. Horizontal Reach - hydraulic	16'0"	20'9"	25'7"	30'4"
Max. Vertical Reach - hydraulic	25'7"	30'6"	34'9"	39'5"
Max. Capacity (lbs.)	1980	1430	1060	790
Crane Weight (lbs.)	1610	1720	1830	1930
Crane Dimensions	84"x73"x23"	84"x73"x23"	84"x73"x23"	84"x73"x23"
Mounting Space	7'1"x1'10"x6'	7'1"x1'10"x6'	7'1"x1'10"x6'	7'1"x1'10"x6'
Slewing Angle (degrees)	380	380	380	380
Oil Tank Capacity (gallons)	9.3	9.3	9.3	9.3
Max. Oil Flow (gpm)	4.3	4.3	4.3	4.3
Max. Working Pressure (psi)	3698	3698	3698	3698
Outrigger Extension	10'0"	10'0"	10'0"	10'0"

### STANDARD FEATURES

- Dual side controls - except with remote
- Hexagonal extension cylinders
- Sliding pads on telescopic extensions
- Flanged Valves
- Self lubricating bushings
- Oil tank
- Din and JIC fittings
- Designed in accordance with EN 12999
- Fatigue test classifications: B3
- Rack and pinion rotation
- Manually extendable stabilizers
- One year warranty

### ACCESSORIES

- RRS radio remote
- Manual extensions
- Optional load limiting device
- Extra function to boom tip
- Extra valve function for winch
- Winch
- Pressure gauge
- Gear pump
- Winch plate
- Turning stabilizers
- Extra side extension of stabilizers
- Stabilizers with hydraulic extensions

