



Amco Veba 804 / 904 RRS - 3 tm available with up to 4 hydraulic extensions



REACH @ CAPACITY

Configuration	Lbs	ft'in"	Lbs	ft'in"	Lbs	ft'in"	Lbs	ft'in"	Lbs	ft'in"
1S	2340	11'11"	1700	16'4"	1210	21'2"				
2S	2180	12'0"	1570	16'6"	1210	21'0"	*930	25'9"		
3S	2050	12'4"	1430	16'10"	1100	21'4"	900	25'9"	*710	30'7"
4S	1920	12'8"	1320	17'2"	990	21'7"	790	26'1"	660	30'7"
										*530

* Manually extendable extension optional

SPECIFICATIONS	1S	2S	3S	4S
Number of Extensions	1-Hydraulic	2-Hydraulic	3- Hydraulic	4- Hydraulic
Crane Rating (ft. lbs.)	27,800 (4 tm)	27,800 (4 tm)	27,800 (4 tm)	27,800 (4 tm)
Max. Horizontal Reach - hydraulic	16'4"	21'0"	25'9"	30'7"
Max. Vertical Reach - hydraulic	25'7"	30'6"	34'9"	39'5"
Max. Capacity (lbs.)	1700	1210	900	660
Crane Weight (lbs.)	1570	1680	1790	1880
Crane Dimensions	84"x73"x23"	84"x73"x23"	84"x73"x23"	84"x73"x23"
Mounting Space	7'1"x 6'x1'10"	7'1"x 6'x1'10"	7'1"x 6'x1'10"	7'1"x 6'x1'10"
Slewing Angle (degrees)	380	380	380	380
Oil Tank Capacity (gallons)	9.3	9.3	9.3	9.3
Max. Oil Flow (gpm)	4.3	4.3	4.3	4.3
Max. Working Pressure (psi)	3263	3263	3263	3263
Stabilizer Extension	10'0"	10'0"	10'0"	10'0"

STANDARD FEATURES

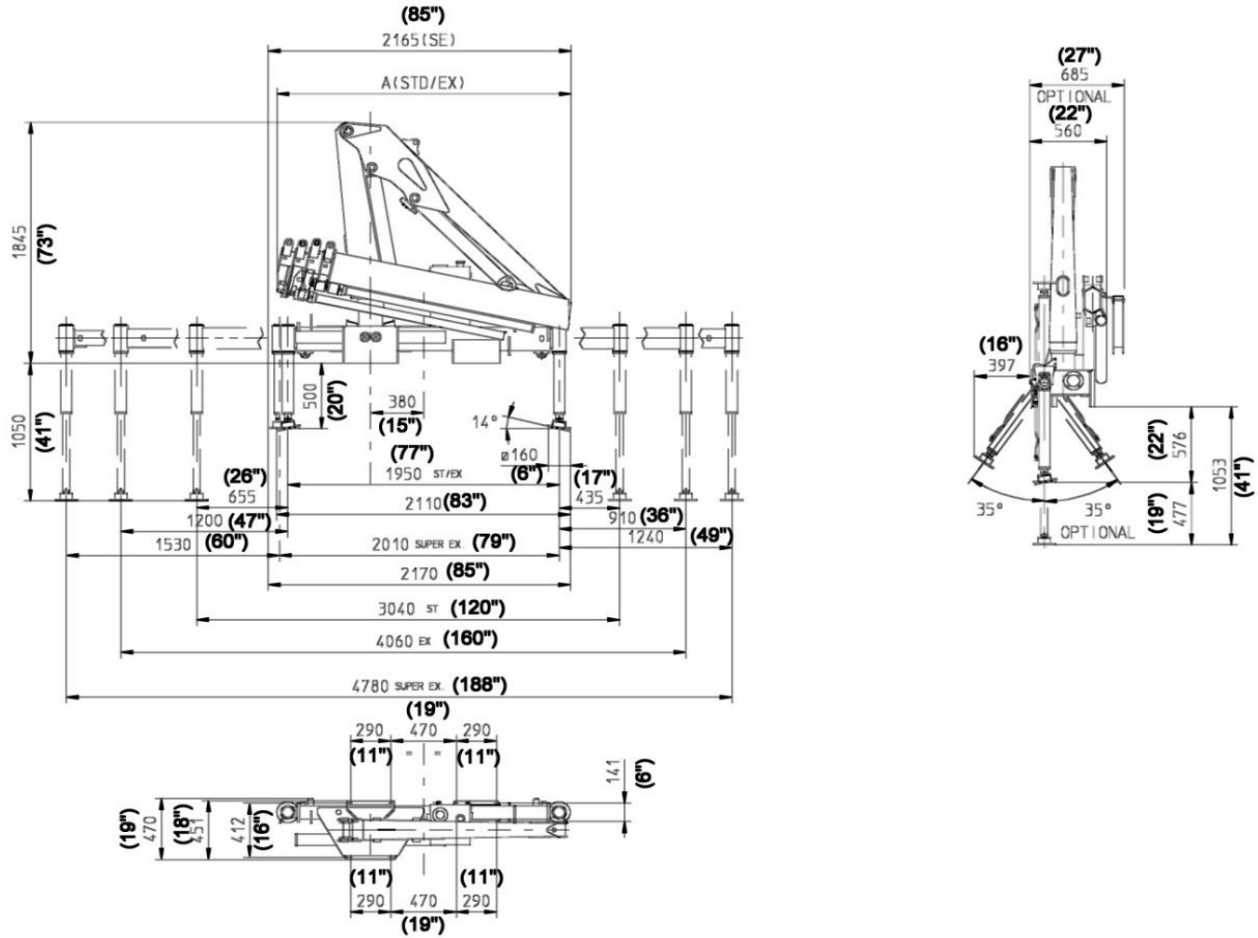
- Dual side controls - except with remote
- Hexagonal extension cylinders
- Sliding pads on telescopic extensions
- Flanged Valves
- Self lubricating bushings
- Oil tank
- Din and JIC fittings
- Designed in accordance with EN 12999
- Fatigue test classifications: B3
- Rack and pinion rotation
- Manually extendable stabilizers
- One year warranty

ACCESSORIES

- Extra side extension of stabilizers
- Extra valve function for winch
- Optional load limiting device
- Manual extensions
- RRS radio remote
- Stabilizers with hydraulic extensions
- Extra function to boom tip for accessories
- Turing stabilizers
- Winch
- Winch plate

DIMENSIONS

804 / 904 4S



	A
1S	2100
2S	2100
3S	2100
4S	2115

Rev.06/2014

2 / 30

SPECIAL FEATURES

*904 Model Includes



Radio Remote Control

The operator can control the crane with high precision proportional levers in every position, and in doing so, can supervise the loading and unloading operations. That means a time savings and greater safety. The operator can also control the truck engine start, stop and accelerator with the remote control. All of the remote controls used by AMCO VEBA have an identification code and are shielded from electro-magnetic fields and from external radio signals.