



585 E. South Frontage Rd., Bolingbrook, IL 60440 1-800-739-4430 • www.fischercrane.com • sales@fischercrane.com



Amco Veba 601T - 1 tm available with up to 2 hydraulic extensions

Easy to use

By having one less function and simpler geometry, the crane is easier to stow, unstow, and use. This makes it very suitable for occasional operators, companies with many operators, and for rental companies.

Light

We omit the first boom found on an articulated version, as well as the offset second boom. Instead, we use an inline boom with extensions. This reduces the weight of the crane.

Compact

Thanks to the design a "T" crane takes up less space on the chassis. The body can be built longer to add space for cargo.



REACH @ CAPACITY		Stabilizer Options	
1S Lbs ft'in"	 1900 1070 690 510 3'7" 6'3" 9'2" 12'0"	A	 D
2S Lbs ft'in"	 1760 990 680 510 3'9" 6'6" 9'2" 12'0"	B C	 E F

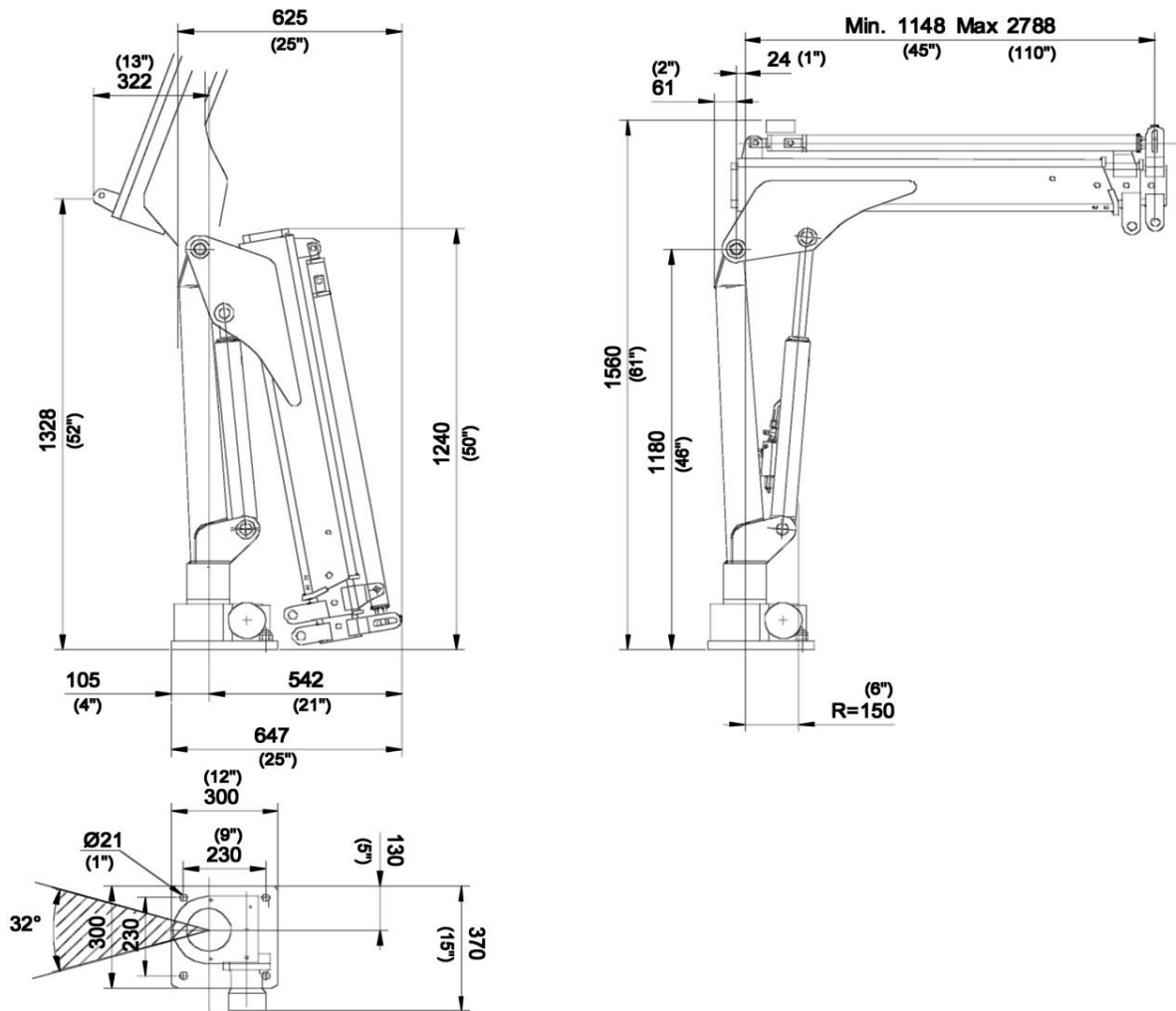
SPECIFICATIONS	1S	2S
Number of Extensions	1-Hydraulic	2-Hydraulic
Crane Rating (ft. lbs.)	6,700	6,700
Max. Horizontal Reach - hydraulic	6'3"	9'2"
Max. Vertical Reach - hydraulic	10'0"	12'6"
Max. Capacity (lbs.)	1070	680
Crane Weight (lbs.)	320	360
Crane Dimensions	24"x49"x18"	27"x49"x18"
Mounting Space	2'1"x1'0"x5'1"	2'1"x1'0"x5'1"
Slewing Angle (degrees)	328	328
Oil Tank Capacity (gallons)	4.6	4.6
Max. oil flow (gpm)	1.3	1.3
Max. working pressure (psi)	2611	2611
Stabilizers	Optional	Optional

STANDARD FEATURES
Load limiting device
Hexagonal section extensions
Independent extension cylinders
Designed in accordance with EN12999
Control panel with customizable position
ABS protective cover on controls
Worm and gear rotation
SAE and JIC fittings
One year warranty

ACCESSORIES
Radio Remote Control
Oil tank
Supplementary elements activation
Mechanical booms
Electro-hydraulic power pack
Turning stabilizer legs
Extra extendable stabilizers
Manually opening stabilizers
Tubular base for stabilizers

DIMENSIONS

601T 2S



Rev. 06 (11/2012)

3 / 15

SPECIAL FEATURES

Optional Radio Remote Control



Radio Remote Control

The operator can control the crane with high precision proportional levers in every position, and in doing so, can supervise the loading and unloading operations. That means a time savings and greater safety. The operator can also control the truck engine start, stop and accelerator with the remote control. All of the remote controls used by AMCO VEBA have an identification code and are shielded from electro-magnetic fields and from external radio signals.

Optional ETR Electric hydraulic power pack

