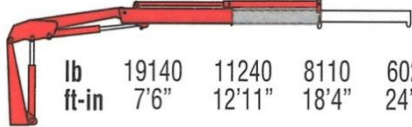
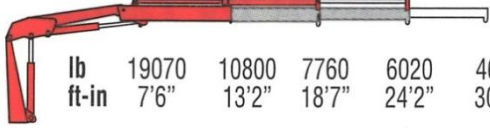
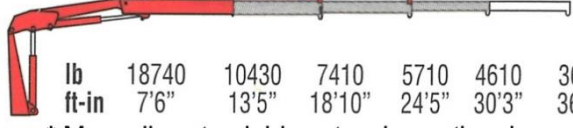




Amco Veba 123 - 23 tm available with up to 3 hydraulic extensions



REACH @ CAPACITY								
1S		lb ft-in	19140 7'6"	11240 12'11"	8110 18'4"	6020 24'2"		
2S		lb ft-in	19070 7'6"	10800 13'2"	7760 18'7"	6020 24'2"	4610 30'3"	
3S		lb ft-in	18740 7'6"	10430 13'5"	7410 18'10"	5710 24'5"	4610 30'3"	3640 36'5"
* Manually extendable extension optional								

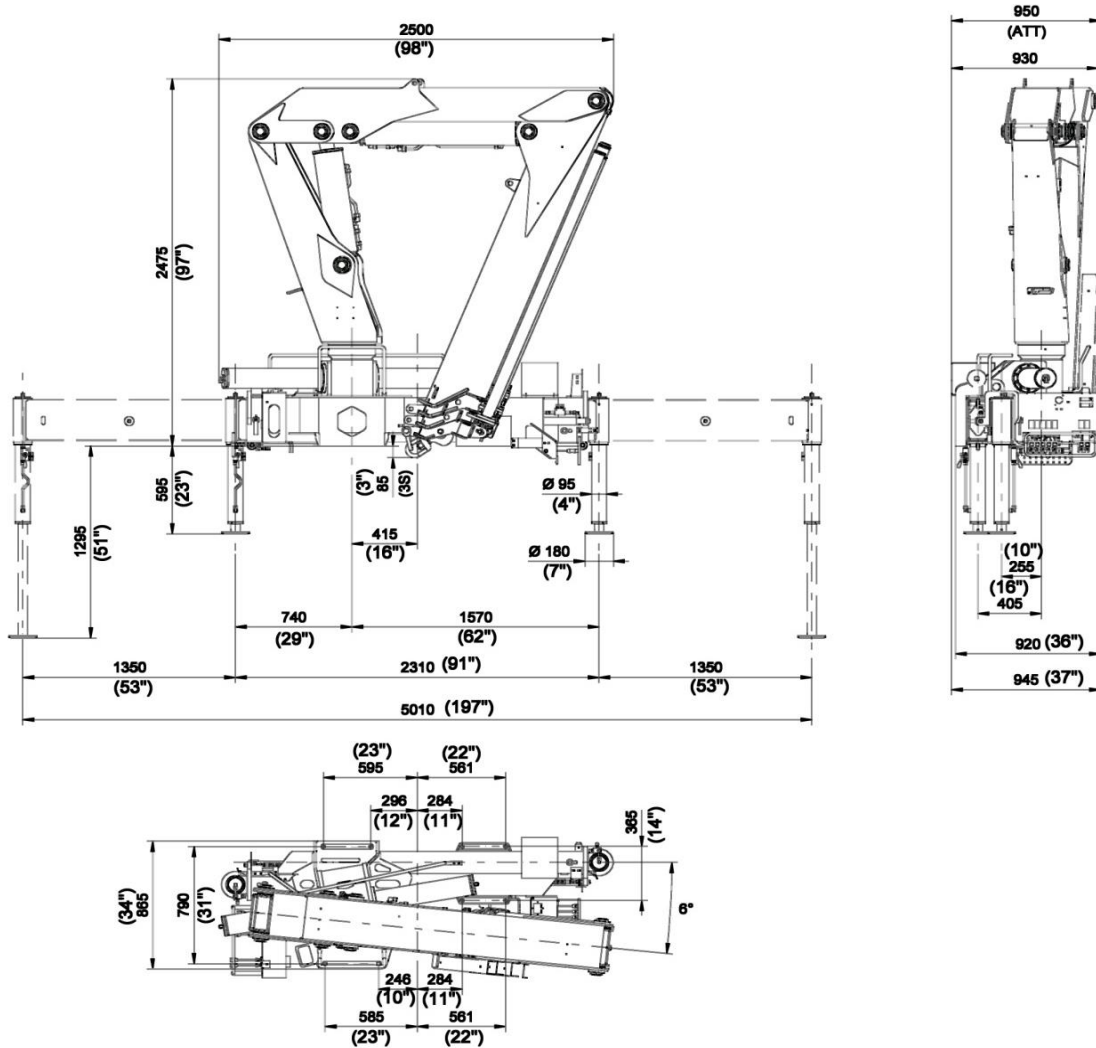
SPECIFICATIONS	1S	2S	3S
<i>Number of Extensions</i>	1-Hydraulic	2-Hydraulic	3-Hydraulic
<i>Crane Rating (ft. lbs.)</i>	148,000	148,000	148,000
<i>Max. Horizontal Reach - hydraulic</i>	18'4"	24'2"	30'3"
<i>Max. Vertical Reach - hydraulic</i>	30'8"	36'3"	42'1"
<i>Max. Capacity (lbs.)</i>	8110	6020	4610
<i>Crane Weight (lbs.)</i>	4608	4905	5181
<i>Crane Dimensions</i>	99"x98"x37"	99"x98"x37"	99"x98"x37"
<i>Mounting Space</i>	7'7"x8'1"x3'1"	7'7"x8'1"x3'1"	7'7"x8'1"x3'1"
<i>Slewing Angle (degrees)</i>	380	380	380
<i>Oil Tank Capacity (gallons)</i>	39.6	39.6	39.6
<i>Max. oil flow (gpm)</i>	10.6	10.6	10.6
<i>Max. working pressure (psi)</i>	4569	4569	4569
<i>Stabilizers manual out</i>	16'5"	16'5"	16'5"

STANDARD FEATURES
<i>Dual side controls</i>
<i>Hexagonal extension cylinders</i>
<i>Sliding pads on telescopic extensions</i>
<i>Flanged Valves</i>
<i>Self lubricating bushings</i>
<i>Oil tank</i>
<i>Din and JIC fittings</i>
<i>Designed in accordance with EN 12999</i>
<i>Fatigue test classifications: B3</i>
<i>Rack and pinion rotation</i>
<i>Manually extendable stabilizers</i>
<i>One year warranty</i>

ACCESSORIES
<i>Load limiting device</i>
<i>Supplementary elements activation</i>
<i>Green Oil</i>
<i>Winch</i>
<i>Winch plate</i>
<i>Extra function for winch</i>

DIMENSIONS

DIMENSIONS 123



Rev. 2012-08

2 / 16

SPECIAL FEATURES



- Compact** - A new design and an inline boom have allowed us to produce a crane that is much more compact
- Light** - The inline boom reduces the crane's weight. The use of special steel allows an excellent lift to weight ratio. A lighter crane equates to a greater payload on the vehicle.
- Strong** - A traditional boom is very stressed at the boom offset, so it must be heavily reinforced. Our inline design make the torsional stress no longer a factor.
- Modular** - to allow the crane to fit a variety of chassis, we have added a sliding bracket for width from 1' 6" to 3'