

Amco Veba 120 - 20 tm available with up to 3 hydraulic extensions



REACH @ CAPACITY

Configuration	Capacity (lb)	Capacity (ft-in)	Capacity (ft)	Capacity (ft)	Capacity (ft)	Capacity (ft)
1S	19140	7'6"	11240	12'11"	8110	18'4"
					* 6020	24'2"
2S	19070	7'6"	10800	13'2"	7760	18'7"
					6020	24'2"
					* 4610	30'3"
3S	18740	7'6"	10430	13'5"	7410	18'10"
					5710	24'5"
					4610	30'3"
					* 3640	36'5"

* Manually extendable extension optional

SPECIFICATIONS	1S	2S	3S
Number of Extensions	1-Hydraulic	2-Hydraulic	3-Hydraulic
Crane Rating (ft. lbs.)	138,000	138,000	138,000
Max. Horizontal Reach - hydraulic	18'4"	24'2"	30'3"
Max. Vertical Reach - hydraulic	30'8"	36'3"	42'1"
Max. Capacity (lbs.)	7560	5580	4250
Crane Weight (lbs.)	4541	4839	5115
Crane Dimensions	99"x98"x37"	99"x98"x37"	99"x98"x37"
Mounting Space	7'7"x8'1"x3'0"	7'7"x8'1"x3'0"	7'7"x8'1"x3'0"
Slewing Angle (degrees)	380	380	380
Oil Tank Capacity (gallons)	39.6	39.6	39.6
Max. oil flow (gpm)	10.6	10.6	10.6
Max. working pressure (psi)	4278	4278	4278
Stabilizers manual out	16'5"	16'5"	16'5"

STANDARD FEATURES

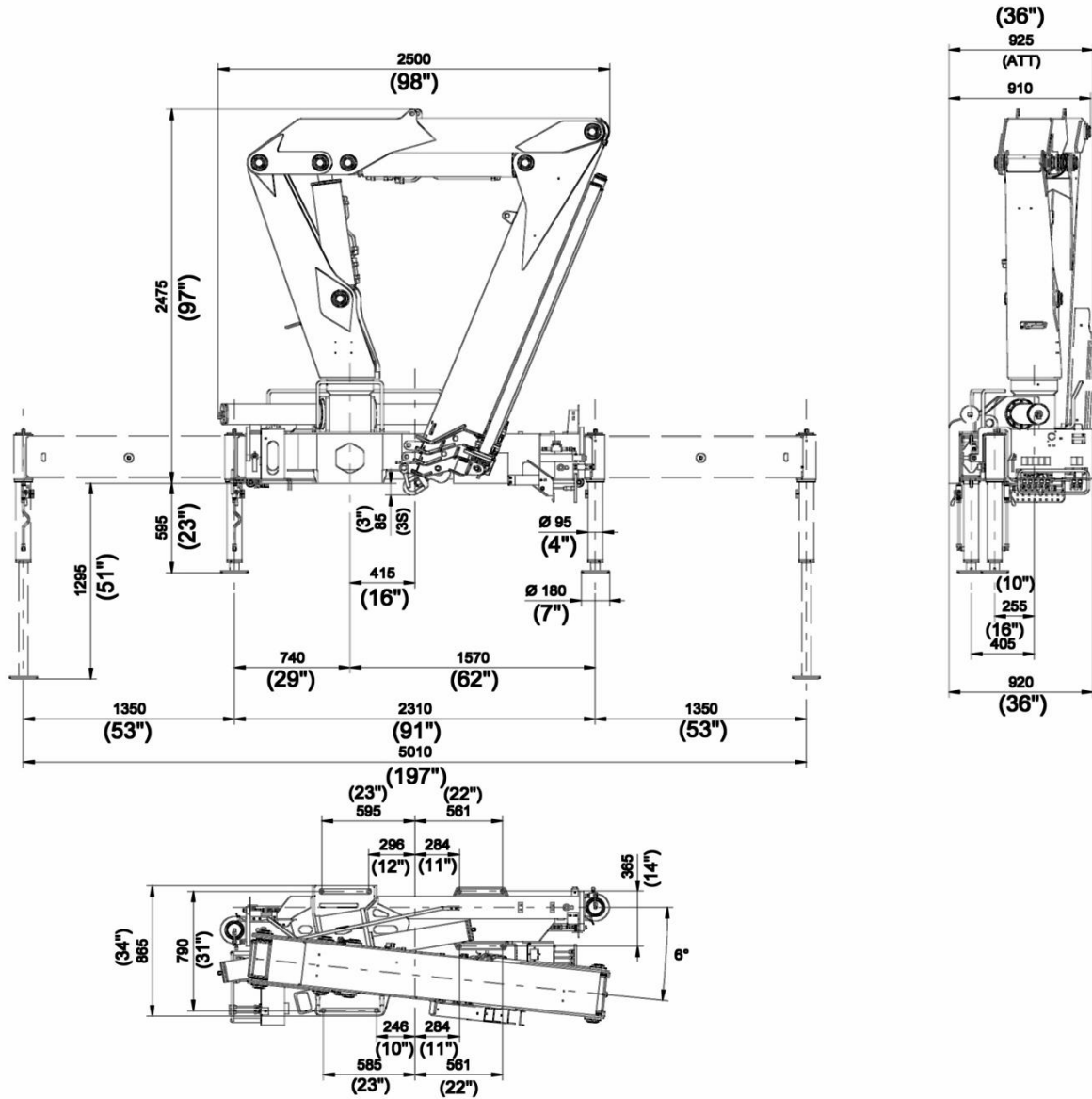
- Dual side controls - except with remote
- Hexagonal extension cylinders
- Sliding pads on telescopic extensions
- Flanged Valves
- Self lubricating bushings
- Oil tank
- Din and JIC fittings
- Designed in accordance with EN 12999
- Fatigue test classifications: B3
- Rack and pinion rotation
- Manually extendable stabilizers
- One year warranty

ACCESSORIES

- Load limiting device
- Supplementary elements activation
- Green Oil
- Winch
- Winch plate
- Extra function for winch

DIMENSIONS

120



Rev. 2014-02

2 / 16

SPECIAL FEARES



- Compact** - A new design and an inline boom have allowed us to produce a crane that is much more compact
- Light** - The inline boom reduces the crane's weight. The use of special steel allows an excellent lift to weight ratio. A lighter crane equates to a greater payload on the vehicle.
- Strong** - A traditional boom is very stressed at the boom offset, so it must be heavily reinforced. Our inline design make the torsional stress no longer a factor.
- Modular** - to allow the crane to fit a variety of chassis, we have added a sliding bracket for width from 1' 6" to 3' 6"

