
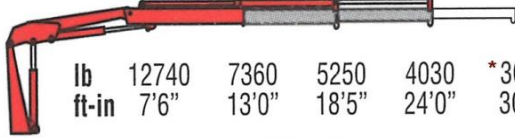



**Amco Veba 115 - 15 tm available with up to 3 hydraulic extensions**



REACH @ CAPACITY						
1S		lb 13120	7720	5530	*4030	
		ft-in 7'6"	12'9"	18'2"	24'0"	
2S		lb 12740	7360	5250	4030	*3060
		ft-in 7'6"	13'0"	18'5"	24'0"	30'1"
3S		lb 12460	7050	5000	3810	3060 *2250
		ft-in 7'6"	13'3"	18'8"	24'3"	30'1" 36'5"

\* Manually extendable extension optional

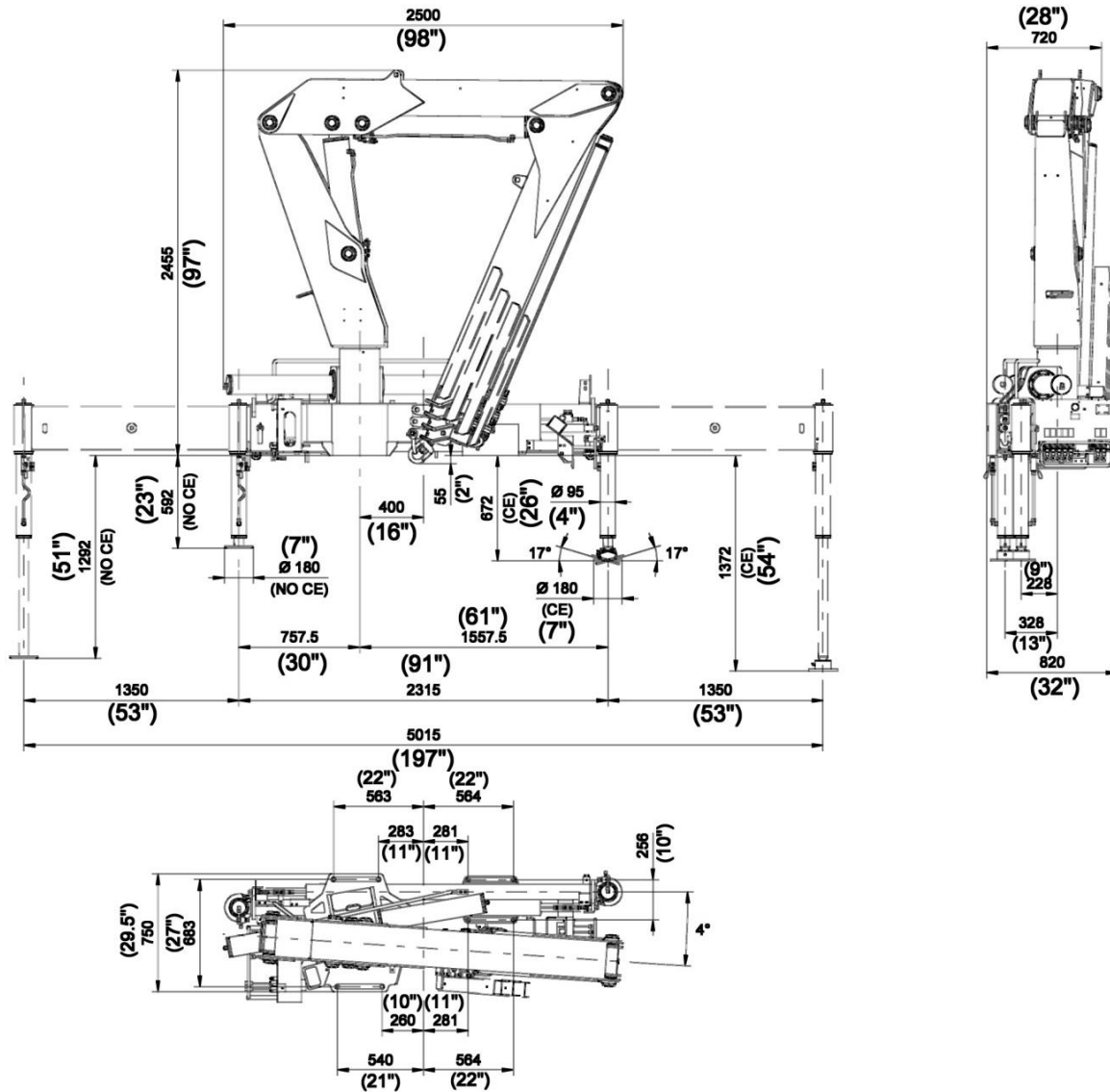
SPECIFICATIONS	1S	2S	3S
Number of Extensions	1-Hydraulic	2-Hydraulic	3-Hydraulic
Crane Rating (ft. lbs.)	101,000	101,000	101,000
Max. Horizontal Reach - hydraulic	18'2"	24'0"	30'1"
Max. Vertical Reach - hydraulic	31'4"	37'1"	41'8"
Max. Capacity (lbs.)	5530	4030	3060
Crane Weight (lbs.)	3550	3800	4030
Crane Dimensions	99"x97"x33"	99"x97"x33"	99"x97"x33"
Mounting Space	7'7"x8'1"x2'8"	7'7"x8'1"x2'8"	7'7"x8'1"x2'8"
Slewing Angle (degrees)	380	380	380
Oil Tank Capacity (gallons)	26.4	26.4	26.4
Max. oil flow (gpm)	6.6	6.6	6.6
Max. working pressure (psi)	4130	4130	4130
Stabilizers manual out	16'5"	16'5"	16'5"

STANDARD FEATURES
Dual side controls
Hexagonal extension cylinders
Sliding pads on telescopic extensions
Flanged Valves
Self lubricating bushings
Oil tank
Din and JIC fittings
Designed in accordance with EN 12999
Fatigue test classifications: B3
Rack and pinion rotation
Manually extendable stabilizers
One year warranty

ACCESSORIES
Load limiting device
Supplementary elements activation
Green Oil
Winch
Winch plate
Extra function for winch

# DIMENSIONS

## 115 3S



# SPECIAL FEARES



**Compact** - A new design and an inline boom have allowed us to produce a crane that is much more compact  
**Light** - The inline boom reduces the crane's weight. The use of special steel allows an excellent lift to weight ratio. A lighter crane equates to a greater payload on the vehicle.  
**Strong** - A traditional boom is very stressed at the boom offset, so it must be heavily reinforced. Our inline design make the torsional stress no longer a factor.

6"

