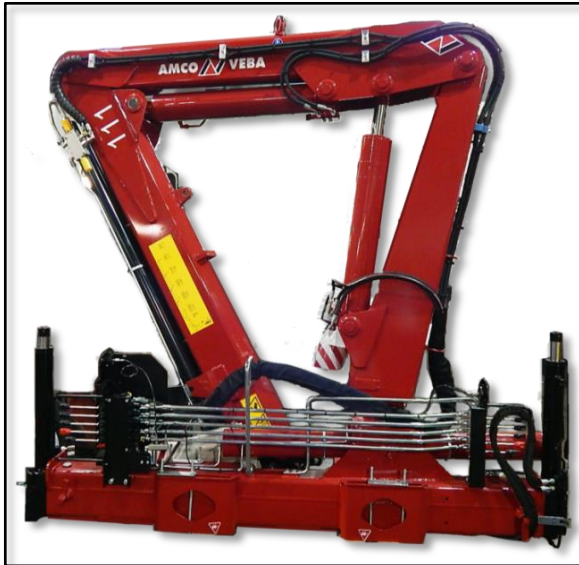

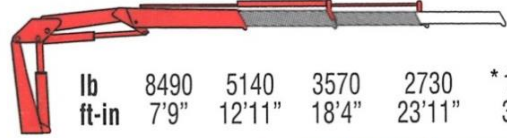
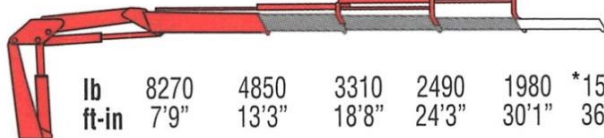


Amco Veba 111 - 11 tm available with up to 3 hydraulic extensions



REACH @ CAPACITY						
1S		lb	8820	5420	3840	* 2730
		ft-in	7'9"	12'8"	18'1"	23'11"
2S		lb	8490	5140	3570	2730 * 1980
		ft-in	7'9"	12'11"	18'4"	23'11" 30'1"
3S		lb	8270	4850	3310	2490 1980 * 1500
		ft-in	7'9"	13'3"	18'8"	24'3" 30'1" 36'6"

* Manually extendable extension optional

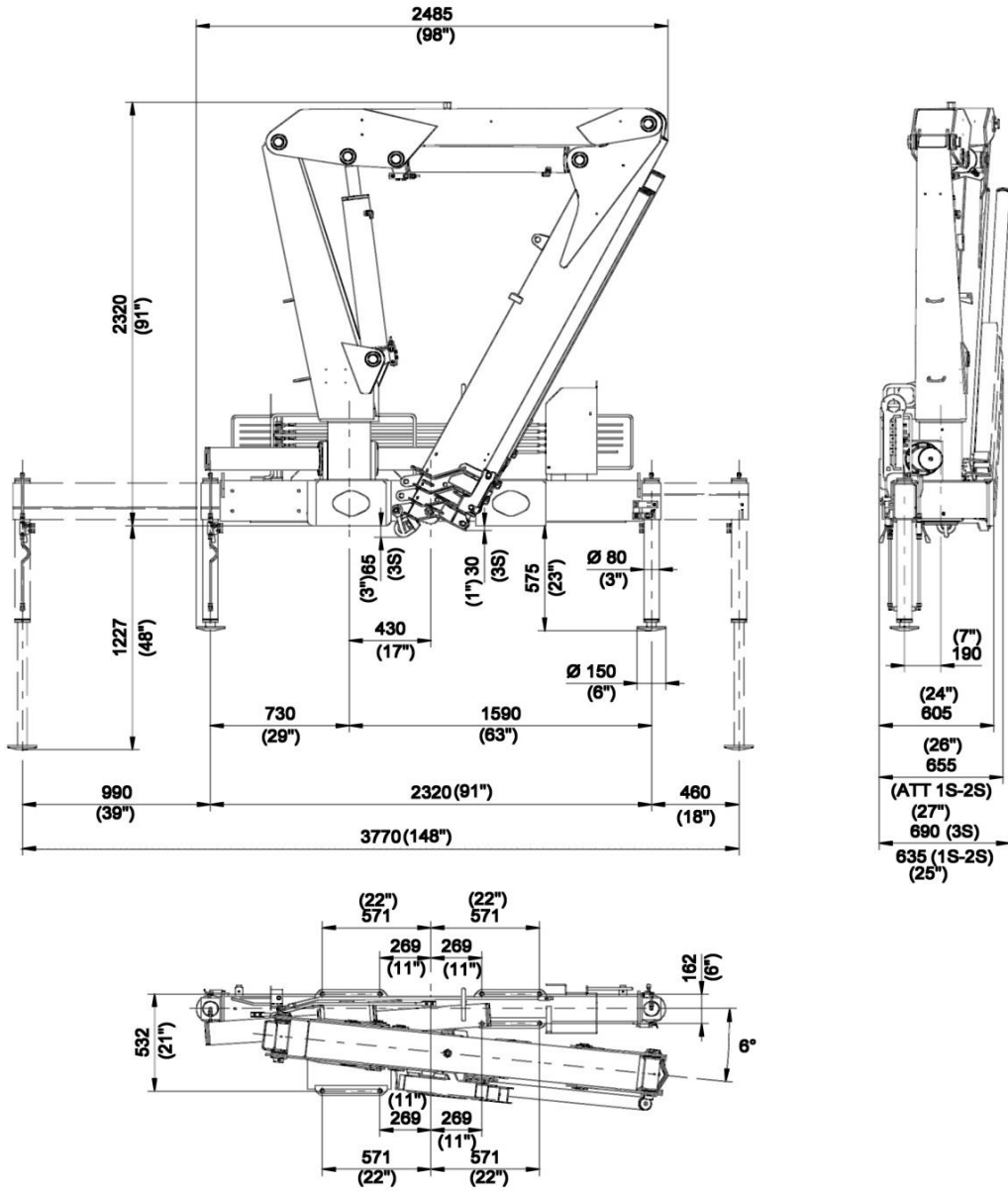
SPECIFICATIONS	1S	1S	3S
Number of Extensions	1-Hydraulic	1-Hydraulic	3-Hydraulic
Crane Rating (ft. lbs.)	69,400	69,400	69,400
Max. Horizontal Reach - hydraulic	18'1"	23'11"	30'1"
Max. Vertical Reach - hydraulic	29'9"	35'7"	41'8"
Max. Capacity (lbs.)	3840	2730	1980
Crane Weight (lbs.)	2524	2745	2943
Crane Dimensions	98"x92"x24"	98"x92"x24"	98"x92"x24"
Mounting Space	7'7"x7'7"x2'0"	7'7"x7'7"x2'0"	7'7"x7'7"x2'0"
Slewing Angle (degrees)	380	380	380
Oil Tank Capacity (gallons)	26.4	26.4	26.4
Max. oil flow (gpm)	6.6	6.6	6.6
Max. working pressure (psi)	3990	3990	3990
Manual stabilizer extension	12'5"	12'5"	12'5"

STANDARD FEATURES
Dual side controls
Hexagonal extension cylinders
Sliding pads on telescopic extensions
Flanged Valves
Self lubricating bushings
Oil tank
Din and JIC fittings
Designed in accordance with EN 12999
Fatigue test classifications: B3
Rack and pinion rotation
Manually extendable stabilizers
One year warranty

Options
Load limiting device
Supplementary elements activation
Green Oil
Winch
Winch plate
Extra function for winch
Manual extension

DIMENSIONS

111 3S



Rev. 2012-04

3 / 19

SPECIAL FEARES



- Compact** - A new design and an inline boom have allowed us to produce a crane that is much more compact
- Light** - The inline boom reduces the crane's weight. The use of special steel allows an excellent lift to weight ratio. A lighter crane equates to a greater payload on the vehicle.
- Strong** - A traditional boom is very stressed at the boom offset, so it must be heavily reinforced. Our inline design make the torsional stress no longer a factor.
- Modular** - to allow the crane to fit a variety of chassis, we have added a sliding bracket for width from 1' 6" to 3' 6"

