



Crane Sales, Service & Parts



US Distribution & Product Support

585 E. South Frontage Rd.
Bolingbrook, IL 60440
sales@fischercrane.com
www.fischercrane.com
1-800-739-4430 or 1-630-739-6900

Amco Veba 108 - 8 tm available with up to 3 hydraulic extensions

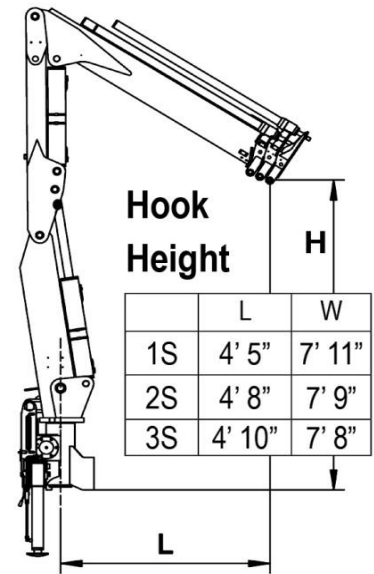


REACH @ CAPACITY

1S	lb	4920	3480	*2540		
	ft-in	11'1"	15'7"	20'3"		
2S	lb	4670	3280	2540	*1940	
	ft-in	11'4"	15'10"	20'3"	25'0"	
3S	lb	4450	3130	2400	1940	*1480
	ft-in	11'7"	16'1"	20'6"	25'0"	29'6"

* Manually extendable extension optional

SPECIFICATIONS	1S	2S	3S
Number of Extensions	1-Hydraulic	2-Hydraulic	3-Hydraulic
Crane Rating (ft. lbs.)	54,600	54,600	54,600
Max. Horizontal Reach - hydraulic	15'7"	20'3"	25'0"
Max. Vertical Reach - hydraulic	25'7"	30'3"	34'10"
Max. Capacity (lbs.)	3480	2540	1940
Crane Weight (lbs.)	1860	2000	2130
Crane Dimensions	92"x80"x23"	92"x80"x23"	92"x80"x23"
Mounting Space	7'1"x6'8"x1'10"	7'1"x6'8"x1'10"	7'1"x6'8"x1'10"
Slewing Angle (degrees)	380	380	380
Oil Tank Capacity (gallons)	12.7	12.7	12.7
Max. oil flow (gpm)	4.2	4.2	4.2
Max. working pressure (psi)	3625	3625	3625
Stabilizers manual out	11'5"	11'5"	11'5"



STANDARD FEATURES

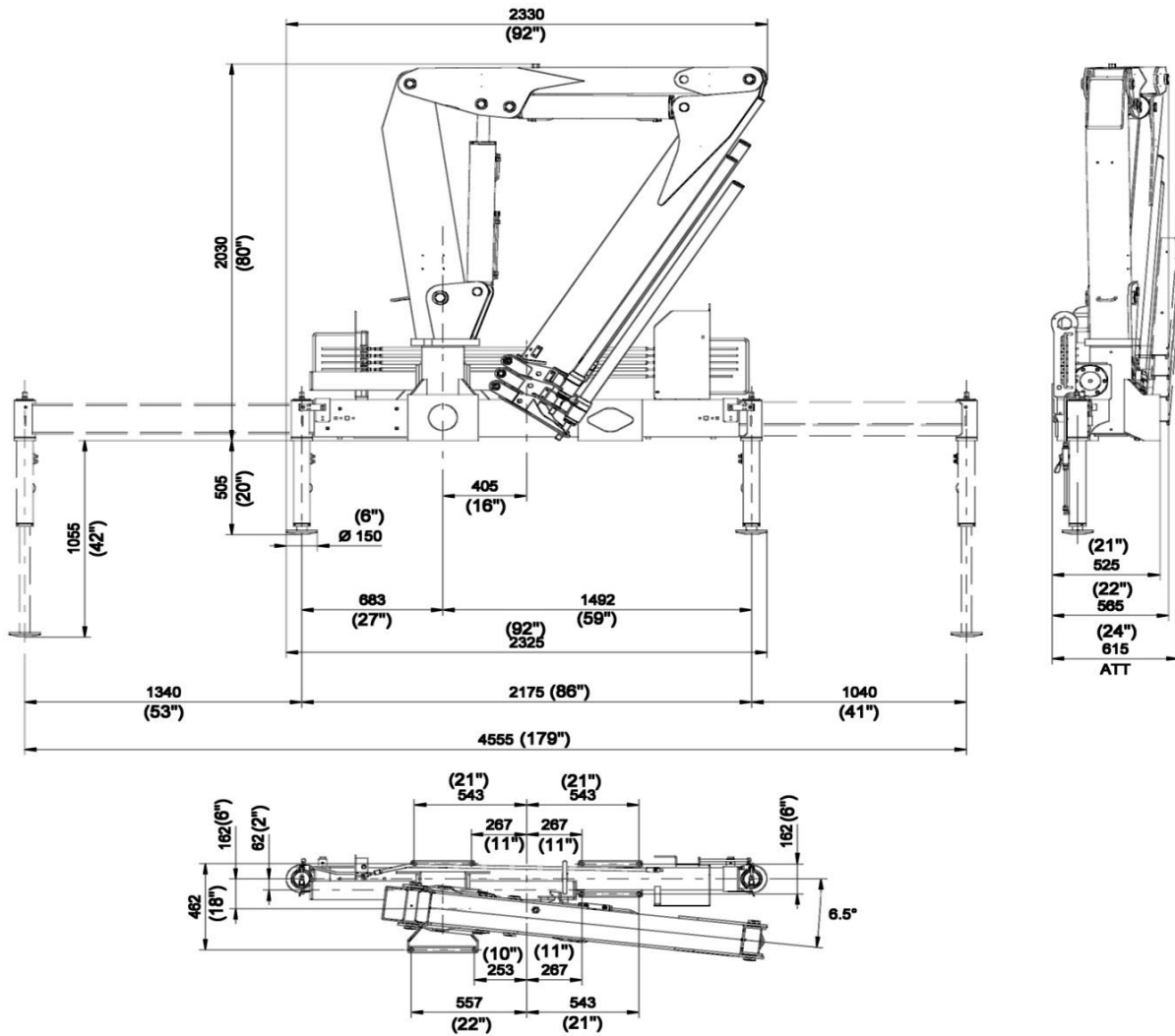
- Dual side controls
- Hexagonal extension cylinders
- Sliding pads on telescopic extensions
- Flanged Valves
- Self lubricating bushings
- Oil tank
- Din and JIC fittings
- Designed in accordance with EN 12999
- Fatigue test classifications: B3
- Rack and pinion rotation
- Manually extendable stabilizers
- One year warranty

Options

- Load limiting device
- Supplementary elements activation
- Green Oil
- Winch
- Winch plate
- Extra function for winch
- Manual extension

DIMENSIONS

108



Rev. 2012-09

3 / 18

SPECIAL FEATURES



- Compact** - A new design and an inline boom have allowed us to produce a crane that is much more compact
- Light** - The inline boom reduces the crane's weight. The use of special steel allows an excellent lift to weight ratio. A lighter crane equates to a greater payload on the vehicle.
- Strong** - A traditional boom is very stressed at the boom offset, so it must be heavily reinforced. Our inline design make the torsional stress no longer a factor.
- Modular** - to allow the crane to fit a variety of chassis, we have added a sliding bracket for width from 1' 6" to 3' 6"

