



US Distribution & Product Support

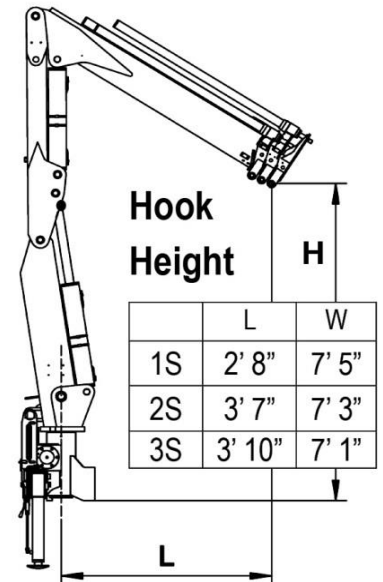
Amco Veba 105 - 5 tm available with up to 3 hydraulic extensions



| REACH @ CAPACITY | | | | | |
|------------------|-------|-------|-------|--------|-------------|
| 1S | lb | 2980 | 2160 | * 1580 | |
| | ft-in | 10'5" | 14'5" | 18'8" | |
| 2S | lb | 2800 | 2020 | 1580 | * 1200 |
| | ft-in | 10'9" | 14'9" | 18'8" | 23'0" |
| 3S | lb | 2650 | 1880 | 1460 | 1200 * 950 |
| | ft-in | 11'1" | 15'1" | 19'0" | 23'0" 27'4" |

* Manually extendable extension optional

| SPECIFICATIONS | 1S | 2S | 3S |
|-----------------------------------|-----------------|-----------------|-----------------|
| Number of Extensions | 1-Hydraulic | 2-Hydraulic | 3-Hydraulic |
| Crane Rating (ft. lbs.) | 31,100 | 31,100 | 31,000 |
| Max. Horizontal Reach - hydraulic | 14'5" | 18'8" | 23'0" |
| Max. Vertical Reach - hydraulic | 23'8" | 27'11" | 32'2" |
| Max. Capacity (lbs.) | 2160 | 1580 | 1200 |
| Crane Weight (lbs.) | 1390 | 1500 | 1600 |
| Crane Dimensions | 85"x77"x17" | 85"x77"x17" | 85"x77"x17" |
| Mounting Space | 4'11"x6'5"x1'5" | 4'11"x6'5"x1'5" | 4'11"x6'5"x1'5" |
| Slewing Angle (degrees) | 380 | 380 | 380 |
| Oil Tank Capacity (gallons) | 12.7 | 12.7 | 12.7 |
| Max. oil flow (gpm) | 3.7 | 3.7 | 3.7 |
| Max. working pressure (psi) | 3916 | 3916 | 3916 |
| Stabilizers manual out | 10'11" | 10'11" | 10'11" |

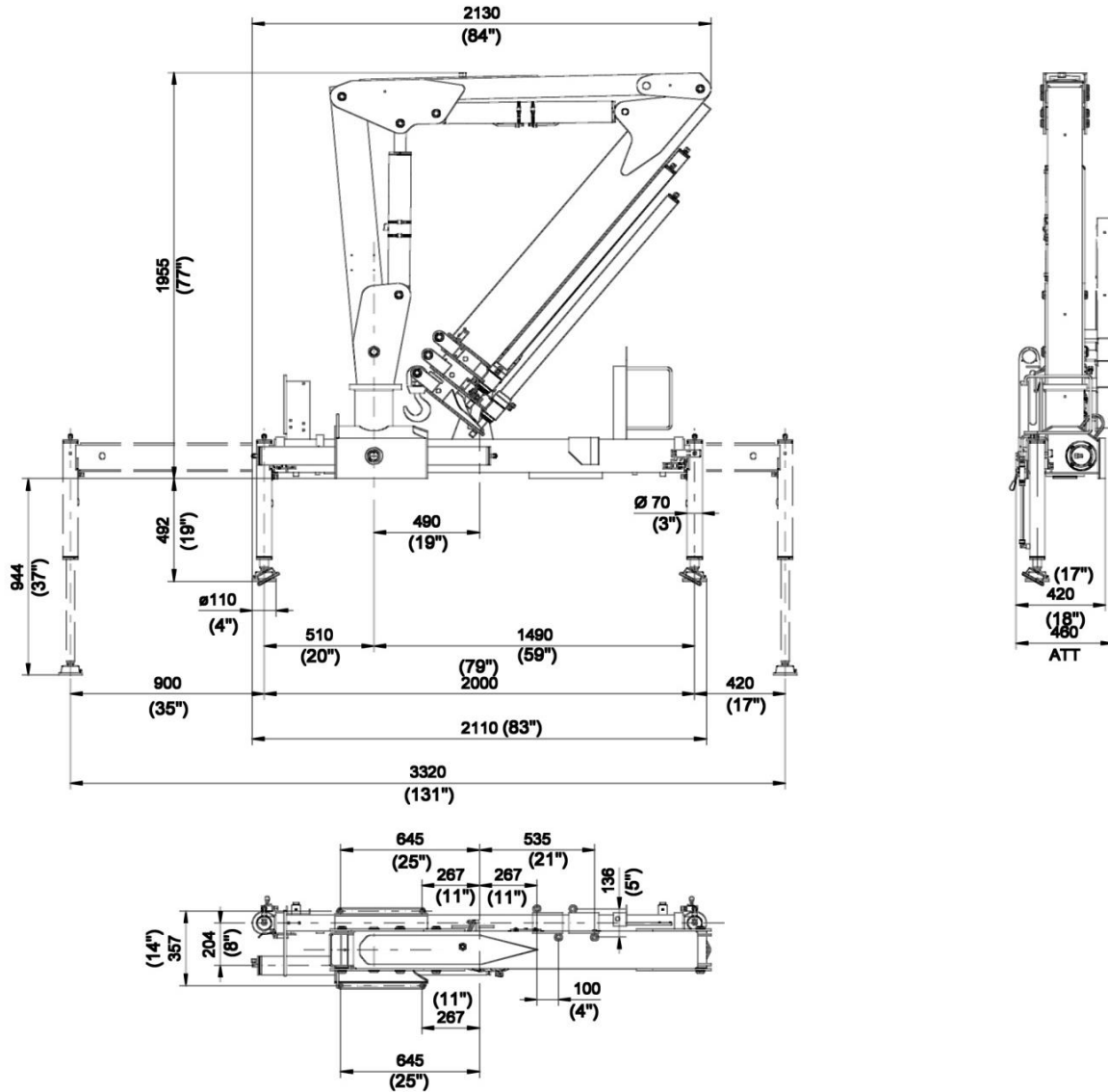


| STANDARD FEATURES |
|---------------------------------------|
| Dual side controls |
| Hexagonal extension cylinders |
| Sliding pads on telescopic extensions |
| Flanged Valves |
| Self lubricating bushings |
| Oil tank |
| Din and JIC fittings |
| Designed in accordance with EN 12999 |
| Fatigue test classifications: B3 |
| Rack and pinion rotation |
| Manually extendable stabilizers |
| One year warranty |

| Options |
|-----------------------------------|
| Load limiting device |
| Supplementary elements activation |
| Green Oil |
| Winch |
| Winch plate |
| Extra function for winch |
| Manual extension |

DIMENSIONS

105



Rev. 2011-12

3 / 16

SPECIAL FEARES



- Compact** - A new design and an inline boom have allowed us to produce a crane that is much more compact
- Light** - The inline boom reduces the crane's weight. The use of special steel allows an excellent lift to weight ratio. A lighter crane equates to a greater payload on the vehicle.
- Strong** - A traditional boom is very stressed at the boom offset, so it must be heavily reinforced. Our inline design make the torsional stress no longer a factor.
- Modular** - to allow the crane to fit a variety of chassis, we have added a sliding bracket for width from 1' 6" to 3' 6"

