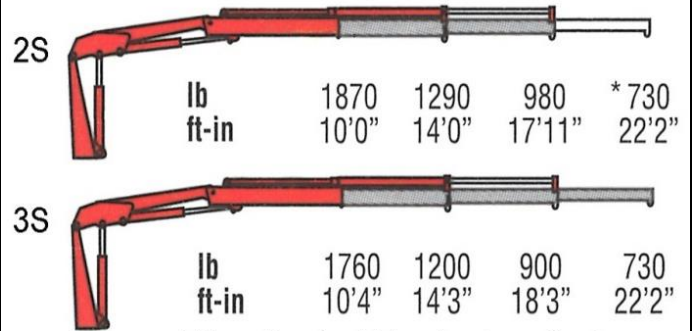


Amco Veba 103 - 3 tm available with up to 2 hydraulic extensions

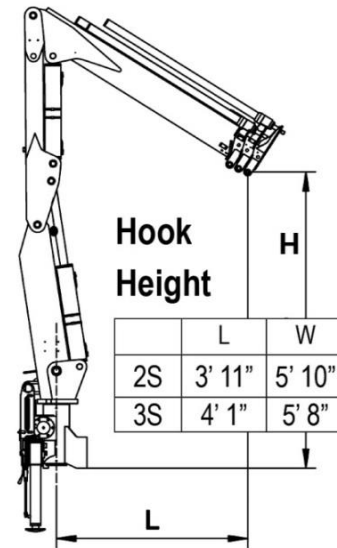


REACH @ CAPACITY



* Manually extendable extension optional

SPECIFICATIONS	2S	3S
Number of Extensions	2-Hydraulic	3-Hydraulic
Crane Rating (ft. lbs.)	18,800	18,800
Max. Horizontal Reach - hydraulic	17'11"	22'2"
Max. Vertical Reach - hydraulic	26'3"	30'2"
Max. Capacity (lbs.)	980	730
Crane Weight (lbs.)	860	930
Crane Dimensions	75"x65"x14"	75"x65"x14"
Mounting Space	5'11"x5'4"x1'2"	5'11"x5'4"x1'2"
Slewing Angle (degrees)	370	370
Oil Tank Capacity (gallons)	4.6	4.6
Max. oil flow (gpm)	2.7	2.7
Max. working pressure (psi)	2973	2973
Stabilizers manual out	9'7"	9'7"



STANDARD FEATURES

- Dual side controls
- Hexagonal extension cylinders
- Sliding pads on telescopic extensions
- Flanged Valves
- Self lubricating bushings
- Oil tank
- Din and JIC fittings
- Designed in accordance with EN 12999
- Fatigue test classifications: B3
- Rack and pinion rotation
- Manually extendable stabilizers
- One year warranty

Options

- Load limiting device
- Supplementary elements activation
- Green Oil
- Winch
- Winch plate
- Extra function for winch
- Manual extension

