

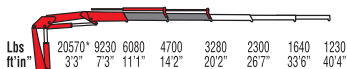
## Standard



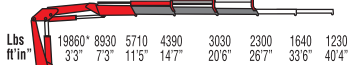
## "C"



### 810C/2S



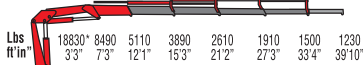
### 810C/3S



### 810C/4S



### 810C/5S



\*) Portata teorica - Theoretical lifting capacity

C= Retractable jib, for high load application

MODELLI MODELS	MOMENTO LIFTING MOMENT	SBRACCIO ORIZ. HORIZ. EXTENSION	PORTATA AL MAX. SBRACCIO MAX. REACH LIFTING CAPACITY	ANGOLO DI ROTAZIONE SLEWING ANGLE	PESO WEIGHT	DIMENSIONE DIMENSION
	ft Lbs	ft'in"	Lbs	°	Lbs	inches WxHxD
810C/2S	67300	20'2"	3280	405	2810	98x86x26
810C/3S	-	26'7"	2300	405	3030	98x86x26
810C/4S	-	33'6"	1640	405	3230	98x86x26
810C/5S	-	39'10"	1230	405	3380	98x86x30